

Take-off blocks - Series MX

Product code: MX2-1/2-B00-LH

Datasheet creation date: 10/03/2025 01:27

Check the most updated document online [click here](#)

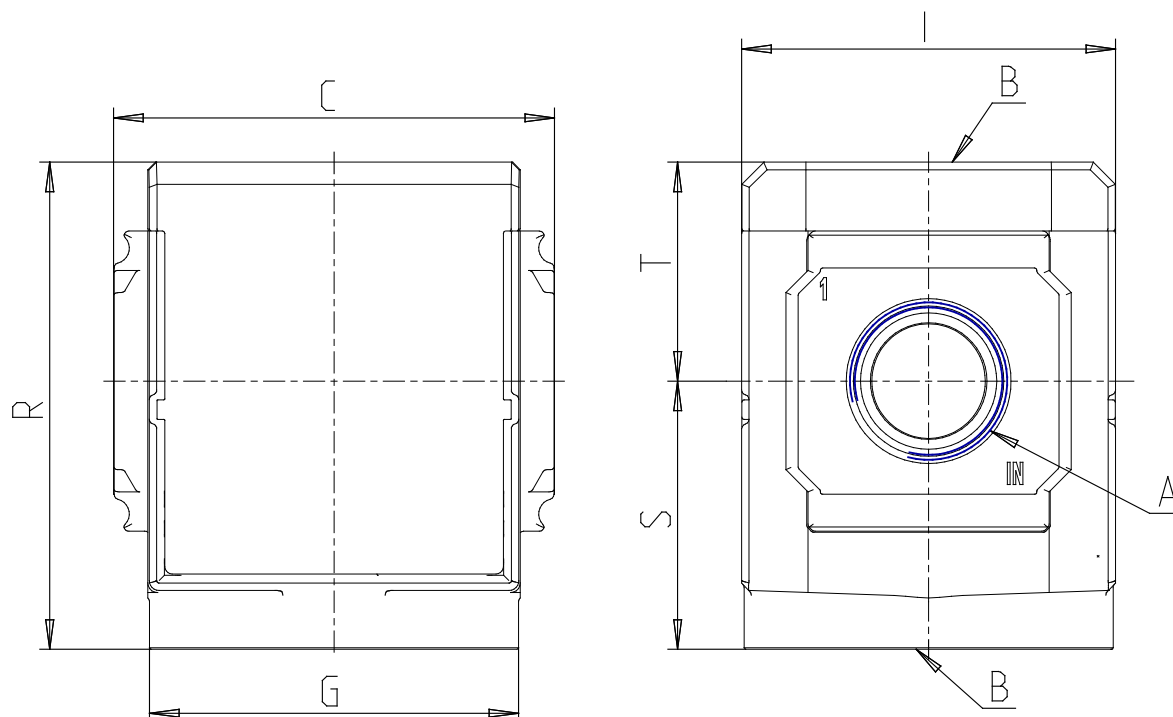


TECHNICAL DATA

Series	MX
Size	2
PORTS (IN - OUT)	1/2 = G1/2
Take-off blocks	B
Design type	00 = without no return valve [VNR] (standard)
Flow direction	LH = from right to left

Take-off blocks - Series MX

Product code: MX2-1/2-B00-LH



DIMENSIONS

A	G1/2
B (bar)	G1/8
C (mm)	70.0
G (mm)	65.0
I (mm)	68
M (mm)	46.5
R (mm)	88
S (mm)	50.5
T (mm)	37.5
Weight (kg)	0.4