

## Soft start valves - Series MX

Product code: MX2-3/4-AV-LH

Datasheet creation date: 10/03/2025 01:12

Check the most updated document online [click here](#)

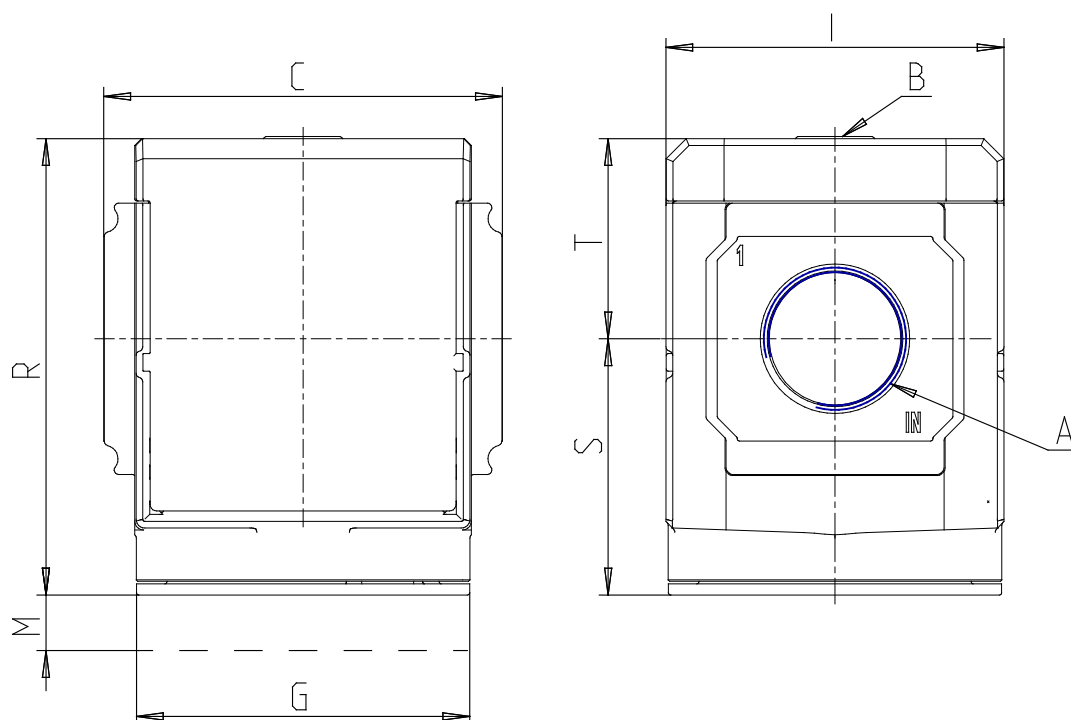


### TECHNICAL DATA

<b>Series</b>	MX
<b>Size</b>	2
<b>PORTS (IN - OUT)</b>	3/4 = G3/4
<b>Soft start valves</b>	AV
<b>Flow direction</b>	LH = from right to left

## Soft start valves - Series MX

Product code: MX2-3/4-AV-LH



### DIMENSIONS

<b>A</b>	G3/4
<b>B (bar)</b>	G1/8
<b>C (mm)</b>	70.0
<b>G (mm)</b>	65
<b>I (mm)</b>	68
<b>M (mm)</b>	46.5
<b>R (mm)</b>	88
<b>S (mm)</b>	50.5
<b>T (mm)</b>	37.5
<b>Weight (kg)</b>	0.4