

Soft start valves - Series MX

Product code: MX2-3/8-AV-LH

Datasheet creation date: 10/03/2025 01:12

Check the most updated document online [click here](#)

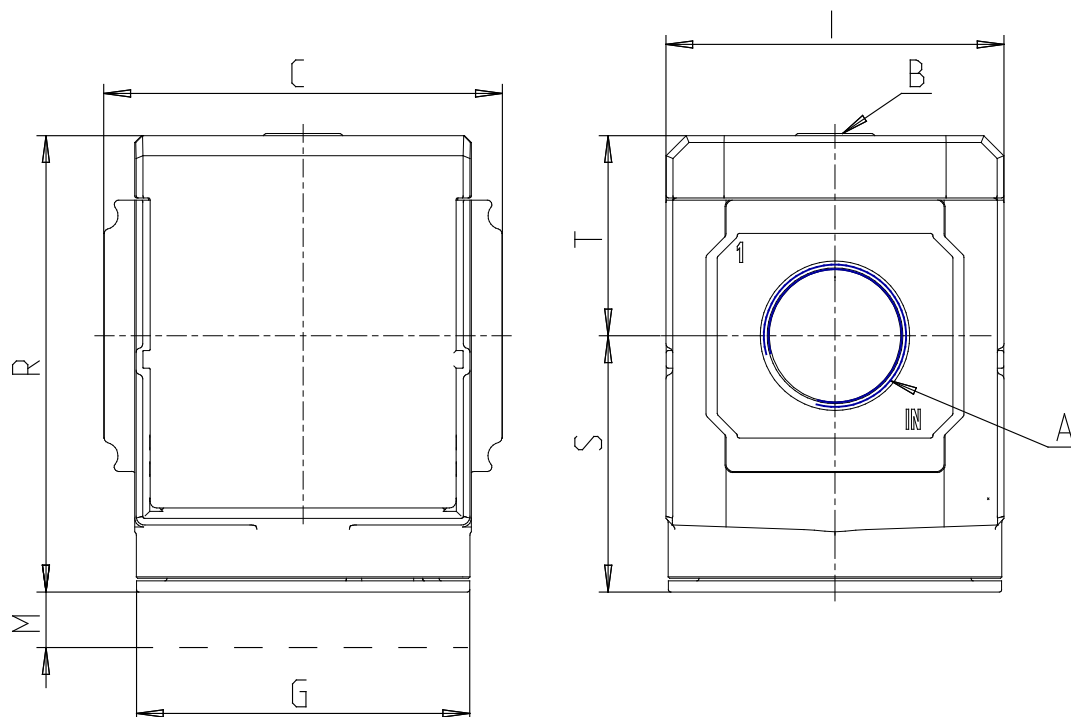


TECHNICAL DATA

Series	MX
Size	2
PORTS (IN - OUT)	3/8 = G3/8
Soft start valves	AV
Flow direction	LH = from right to left

Soft start valves - Series MX

Product code: MX2-3/8-AV-LH



DIMENSIONS

A	G3/8
B (bar)	G1/8
C (mm)	70.0
G (mm)	65
I (mm)	68
M (mm)	46.5
R (mm)	88
S (mm)	50.5
T (mm)	37.5
Weight (kg)	0.4