

Soft start valves - Series MX

Product code: MX3-1-AV-LH

Datasheet creation date: 10/03/2025 01:13

Check the most updated document online [click here](#)

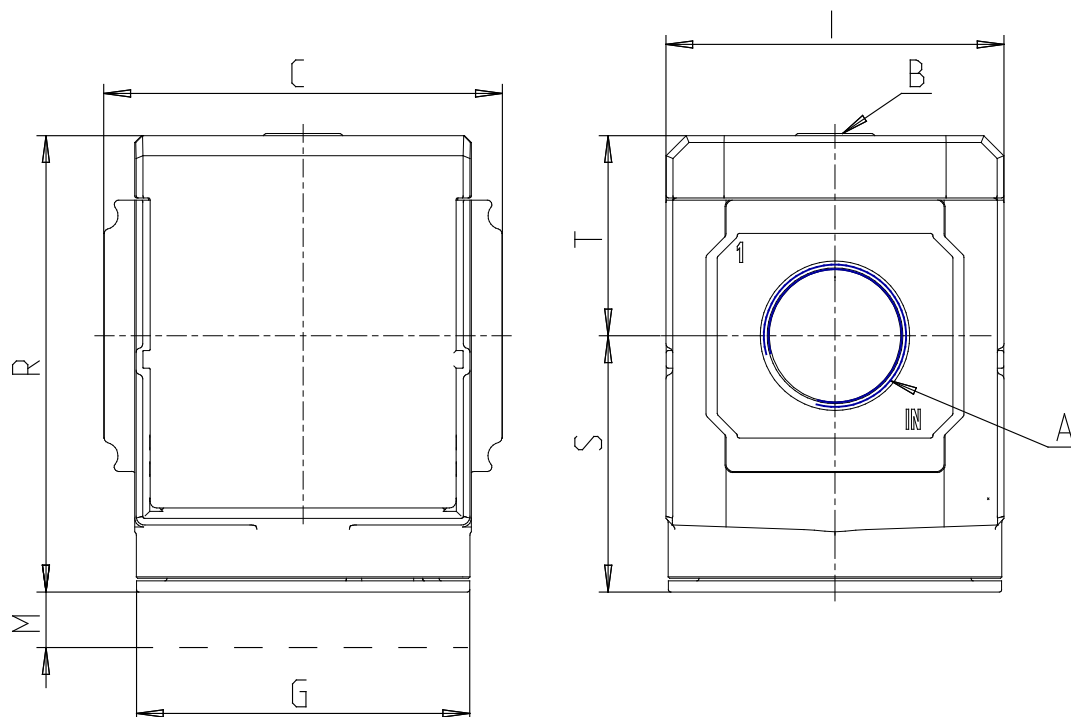


TECHNICAL DATA

Series	MX
Size	3
PORTS (IN - OUT)	1 = G1
Soft start valves	AV
Flow direction	LH = from right to left

Soft start valves - Series MX

Product code: MX3-1-AV-LH



DIMENSIONS

A	G1
B (bar)	G1/8
C (mm)	89.5
G (mm)	75
I (mm)	76
M (mm)	48.0
R (mm)	102
S (mm)	57.5
T (mm)	44.5
Weight (kg)	0.7