

## Elettrovalvole a comando diretto - Serie P

Product code: P000-303-E52-OX2

Datasheet creation date: 10/03/2025 11:38

Check the most updated document online [click here](#)

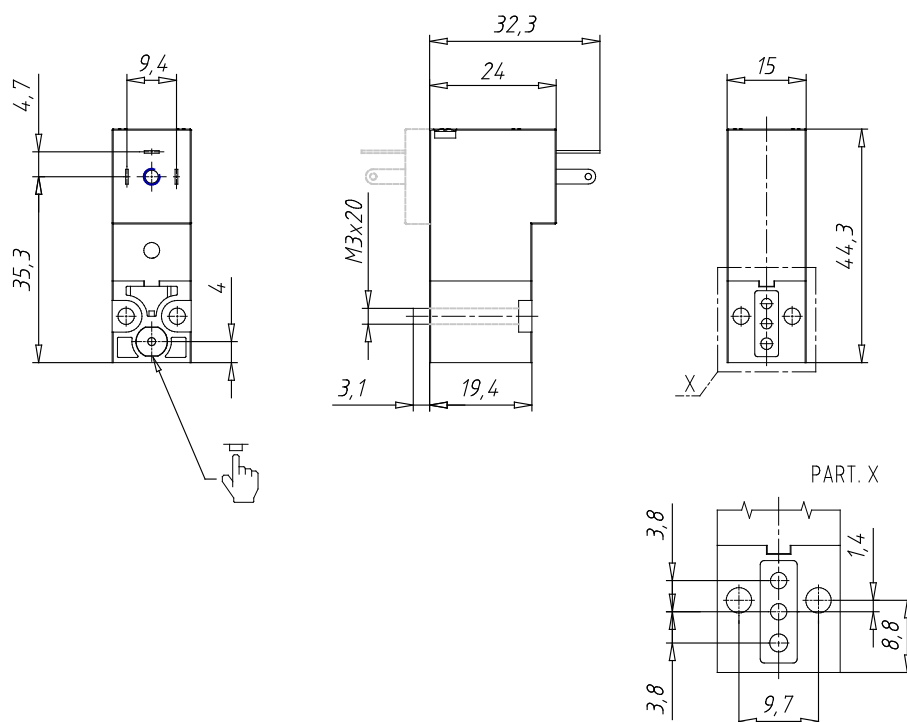


### TECHNICAL DATA

<b>Series</b>	P
<b>Body execution</b>	0 = interface
<b>Number of seats</b>	00 = ISO 15218 interface
<b>Number of ways - Functions</b>	3 = 3/2 way - NC
<b>Valve connections</b>	0 = ISO 15218 interface
<b>Orifice diameter</b>	3 = Ø 1.5 mm
<b>Materials</b>	E = PBT body - EPDM seals
<b>Electrical connection</b>	5 = industrial standard (9.4 mm)
<b>Voltage - Absorbed power</b>	2 = 12 V DC - 2 W
<b>Fixing</b>	= fixing screws for metal
<b>Options</b>	OX2 = for oxygen (non-volatile residue less than 33 mg / m <sup>2</sup> )

## Elettrovalvole a comando diretto - Serie P

Product code: P000-303-E52-OX2



### DIMENSIONS

<b>Series</b>	P
<b>Body execution</b>	0 = interface
<b>Number of seats</b>	00 = ISO 15218 interface
<b>Number of ways - Functions</b>	3 = 3/2 way - NC
<b>Valve connections</b>	0 = ISO 15218 interface
<b>Orifice diameter</b>	3 = Ø 1.5 mm
<b>Materials</b>	E = PBT body - EPDM seals
<b>Electrical connection</b>	5 = industrial standard (9.4 mm)
<b>Voltage - Absorbed power</b>	2 = 12 V DC - 2 W
<b>Fixing</b>	= fixing screws for metal
<b>Options</b>	OX2 = for oxygen (non-volatile residue less than 33 mg / m <sup>2</sup> )