

## Elettrovalvole a comando diretto - Serie P

Product code: P000-306-P53

Datasheet creation date: 10/03/2025 11:38

Check the most updated document online [click here](#)

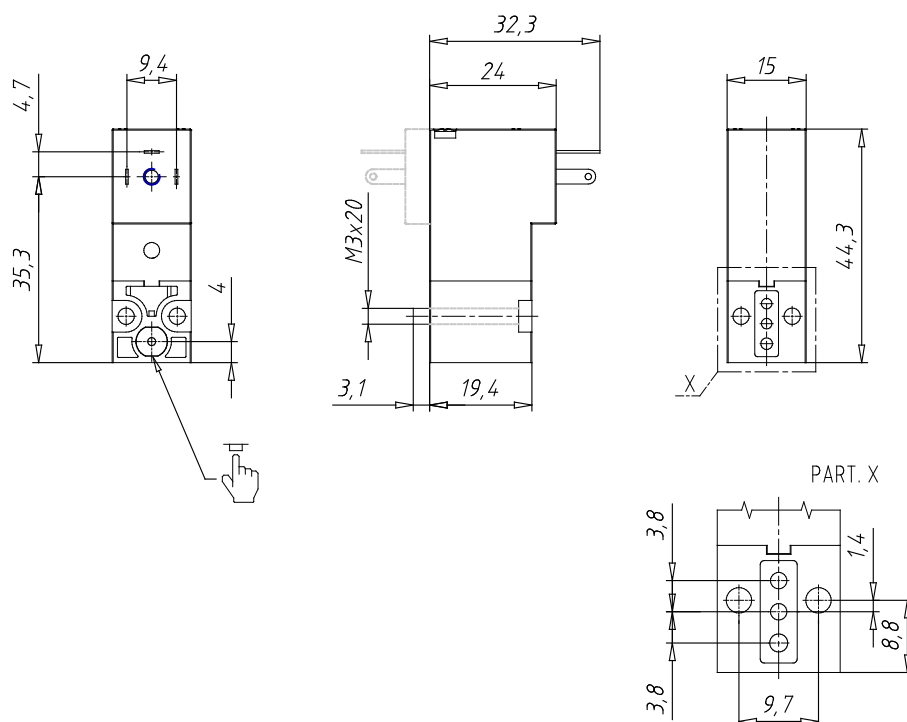


### TECHNICAL DATA

|                                   |  |
|-----------------------------------|--|
| <b>Series</b>                     | P  |
| <b>Body execution</b>             | 0 = interface                                    |
| <b>Number of seats</b>            | 00 = ISO 15218 interface                         |
| <b>Number of ways - Functions</b> | 3 = 3/2 way - NC                                 |
| <b>Valve connections</b>          | 0 = ISO 15218 interface                          |
| <b>Orifice diameter</b>           | 6 = Ø 1.5 mm (with voltage tolerance -25% + 10%) |
| <b>Materials</b>                  | P = PBT body - NBR - FKM - PU seals              |
| <b>Electrical connection</b>      | 5 = industrial standard (9.4 mm)                 |
| <b>Voltage - Absorbed power</b>   | 3 = 24 V DC - 2 W                                |
| <b>Fixing</b>                     | = fixing screws for metal                        |
| <b>Options</b>                    | = Standard                                       |

## Elettrovalvole a comando diretto - Serie P

Product code: P000-306-P53



### DIMENSIONS

|                                   |  |
|-----------------------------------|--|
| <b>Series</b>                     | P  |
| <b>Body execution</b>             | 0 = interface                                    |
| <b>Number of seats</b>            | 00 = ISO 15218 interface                         |
| <b>Number of ways - Functions</b> | 3 = 3/2 way - NC                                 |
| <b>Valve connections</b>          | 0 = ISO 15218 interface                          |
| <b>Orifice diameter</b>           | 6 = Ø 1.5 mm (with voltage tolerance -25% + 10%) |
| <b>Materials</b>                  | P = PBT body - NBR - FKM - PU seals              |
| <b>Electrical connection</b>      | 5 = industrial standard (9.4 mm)                 |
| <b>Voltage - Absorbed power</b>   | 3 = 24 V DC - 2 W                                |
| <b>Fixing</b>                     | = fixing screws for metal                        |
| <b>Options</b>                    | = Standard                                       |