

## Elettrovalvole a comando diretto - Serie P

Product code: P000-403-F52-OX1

Datasheet creation date: 10/03/2025 11:39

Check the most updated document online [click here](#)

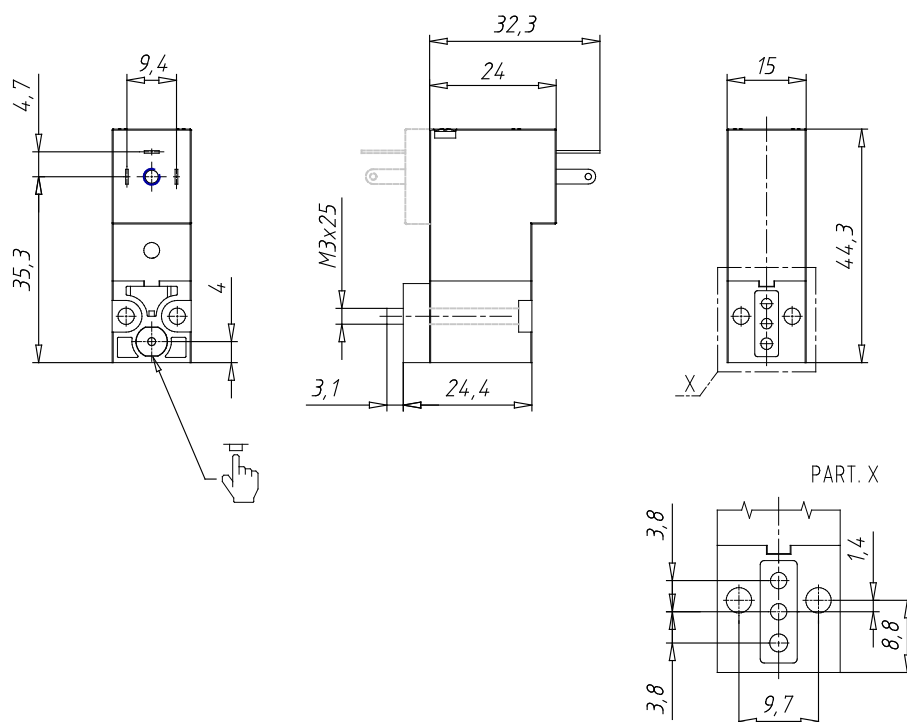


### TECHNICAL DATA

<b>Series</b>	P
<b>Body execution</b>	0 = interface
<b>Number of seats</b>	00 = ISO 15218 interface
<b>Number of ways - Functions</b>	4 = 3/2 way - NO
<b>Valve connections</b>	0 = ISO 15218 interface
<b>Orifice diameter</b>	3 = Ø 1.5 mm
<b>Materials</b>	F = PBT body - FKM seals
<b>Electrical connection</b>	5 = industrial standard (9.4 mm)
<b>Voltage - Absorbed power</b>	2 = 12 V DC - 2 W
<b>Fixing</b>	= fixing screws for metal
<b>Options</b>	OX1 = for oxygen (non-volatile residue less than 550 mg / m <sup>2</sup> )

## Elettrovalvole a comando diretto - Serie P

Product code: P000-403-F52-OX1



### DIMENSIONS

<b>Series</b>	P
<b>Body execution</b>	0 = interface
<b>Number of seats</b>	00 = ISO 15218 interface
<b>Number of ways - Functions</b>	4 = 3/2 way - NO
<b>Valve connections</b>	0 = ISO 15218 interface
<b>Orifice diameter</b>	3 = Ø 1.5 mm
<b>Materials</b>	F = PBT body - FKM seals
<b>Electrical connection</b>	5 = industrial standard (9.4 mm)
<b>Voltage - Absorbed power</b>	2 = 12 V DC - 2 W
<b>Fixing</b>	= fixing screws for metal
<b>Options</b>	OX1 = for oxygen (non-volatile residue less than 550 mg / m <sup>2</sup> )