

## Elettrovalvole a comando diretto - Serie P

Product code: P000-503-P53P

Datasheet creation date: 10/03/2025 11:39

Check the most updated document online [click here](#)

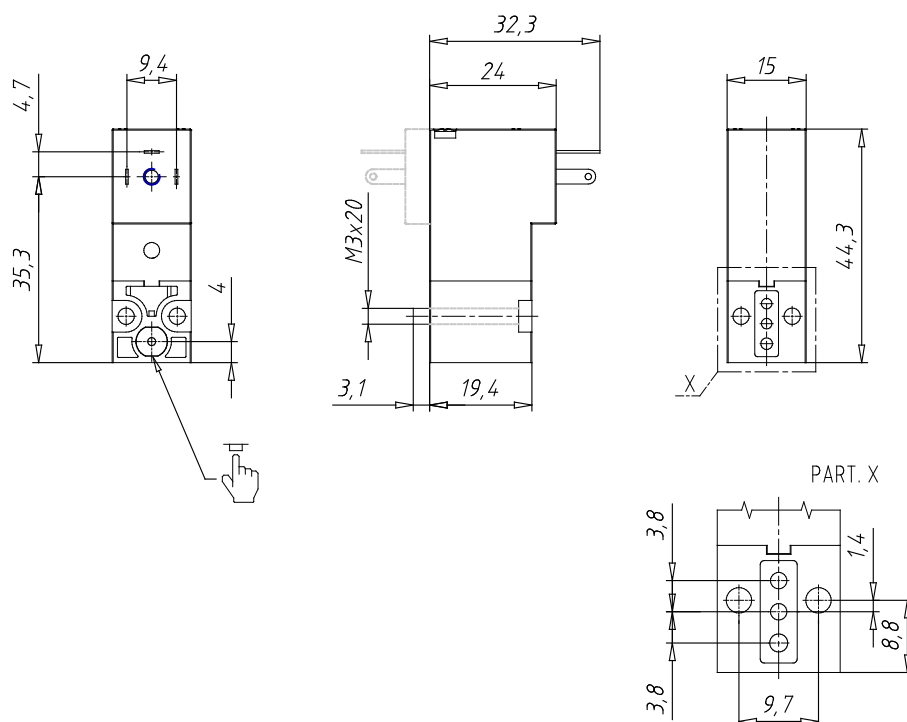


### TECHNICAL DATA

<b>Series</b>	P
<b>Body execution</b>	0 = interface
<b>Number of seats</b>	00 = ISO 15218 interface
<b>Number of ways - Functions</b>	5 = 3/2 ways - NC electrical part turned by 180 °
<b>Valve connections</b>	0 = ISO 15218 interface
<b>Orifice diameter</b>	3 = Ø 1.5 mm
<b>Materials</b>	P = PBT body - NBR - FKM - PU seals
<b>Electrical connection</b>	5 = industrial standard (9.4 mm)
<b>Voltage - Absorbed power</b>	3 = 24 V DC - 2 W
<b>Fixing</b>	P = fixing screws for plastic
<b>Options</b>	= Standard

## Elettrovalvole a comando diretto - Serie P

Product code: P000-503-P53P



### DIMENSIONS

<b>Series</b>	P
<b>Body execution</b>	0 = interface
<b>Number of seats</b>	00 = ISO 15218 interface
<b>Number of ways - Functions</b>	5 = 3/2 ways - NC electrical part turned by 180 °
<b>Valve connections</b>	0 = ISO 15218 interface
<b>Orifice diameter</b>	3 = Ø 1.5 mm
<b>Materials</b>	P = PBT body - NBR - FKM - PU seals
<b>Electrical connection</b>	5 = industrial standard (9.4 mm)
<b>Voltage - Absorbed power</b>	3 = 24 V DC - 2 W
<b>Fixing</b>	P = fixing screws for plastic
<b>Options</b>	= Standard