

## Direct acting solenoid valves - Series PL

Product code: PL000-301-ST2H

Datasheet creation date: 10/03/2025 11:41

Check the most updated document online [click here](#)

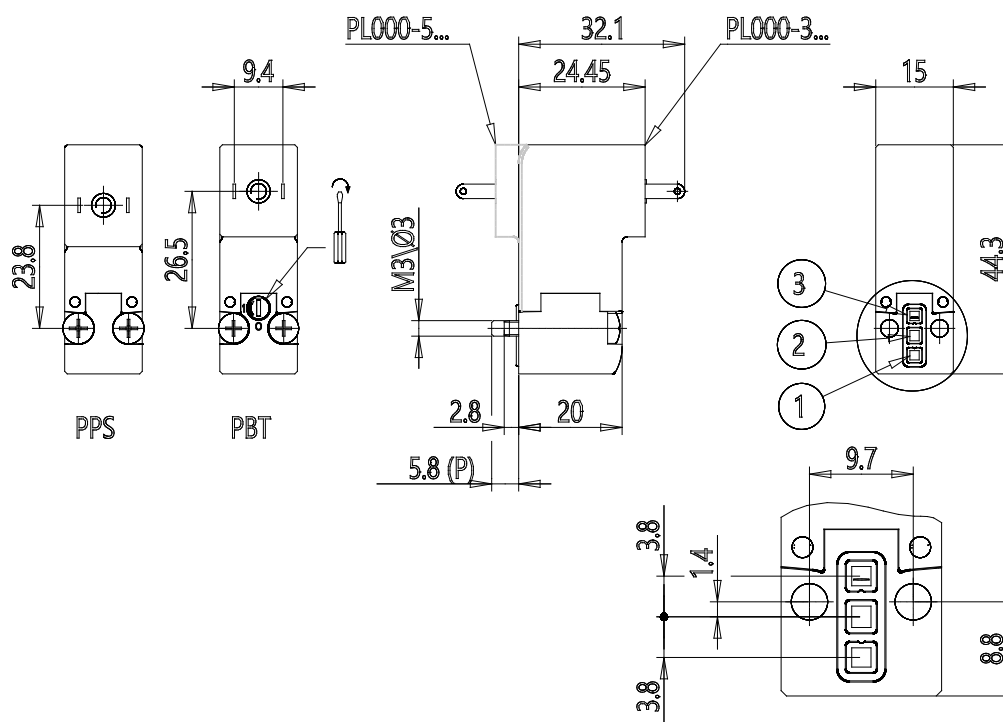


### TECHNICAL DATA

<b>Series</b>	PL
<b>Valvebody</b>	0 = interface
<b>Number of positions</b>	00 = ISO 15218 or Series PD interface
<b>Number of ways - Functions</b>	3 = 3/2 way - NC
<b>Valve connections</b>	0 = single sub-base (M5 only) or interface
<b>Orifice diametres</b>	1 = Ø 1.1 mm
<b>Materials</b>	ST = PPS body - Low Temperature NBR seals (on demand)
<b>Electric connection</b>	2 = industrial standard connection (9.4 mm)
<b>Voltage - Absorbed power</b>	H = 110 V DC - 3 W - PPS (can be combined with all PPS models)
<b>Fixing</b>	= fixing screws for metal
<b>Manual override</b>	= not required or not applicable
<b>Option</b>	= standard

## Direct acting solenoid valves - Series PL

Product code: PL000-301-ST2H



### DIMENSIONS

<b>Series</b>	PL
<b>Valvebody</b>	0 = interface
<b>Number of positions</b>	00 = ISO 15218 or Series PD interface
<b>Number of ways - Functions</b>	3 = 3/2 way - NC
<b>Valve connections</b>	0 = single sub-base (M5 only) or interface
<b>Orifice diametres</b>	1 = Ø 1.1 mm
<b>Materials</b>	ST = PPS body - Low Temperature NBR seals (on demand)
<b>Electric connection</b>	2 = industrial standard connection (9.4 mm)
<b>Voltage - Absorbed power</b>	H = 110 V DC - 3 W - PPS (can be combined with all PPS models)
<b>Fixing</b>	= fixing screws for metal
<b>Manual override</b>	= not required or not applicable
<b>Option</b>	= standard