

## Cylinders with integrated guide - Series QCT QCB

Product code: QCB2A032A025

Datasheet creation date: 09/03/2025 23:09

Check the most updated document online [click here](#)

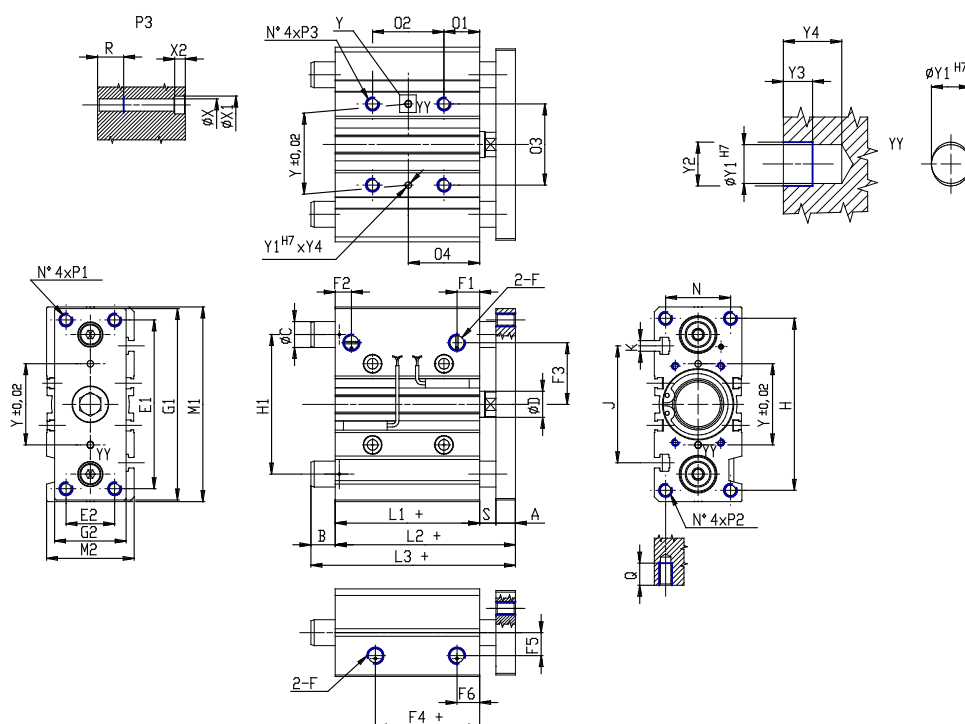


### TECHNICAL DATA

<b>Series</b>	QC
<b>Version</b>	B = linear ball bearings
<b>Operation</b>	2 = double acting
<b>Materials</b>	A = anodized aluminium body rolled stainless steel 303 piston rod hardened steel C50 columns for QCB
<b>Diameter (mm)</b>	32
<b>Construction</b>	A = standard
<b>Stroke type</b>	standard
<b>Stroke (mm)</b>	25

## Cylinders with integrated guide - Series QCT QCB

Product code: QCB2A032A025



### DIMENSIONS

<b>L3 (mm)</b>	86.0
<b>C (mm)</b>	16
<b>B (mm)</b>	26.5
<b>O2 (mm)</b>	24
<b>O4 (mm)</b>	33
<b>A (mm)</b>	12
<b>D (mm)</b>	16
<b>E1 (mm)</b>	96
<b>E2 (mm)</b>	30
<b>F</b>	G 1/8
<b>F1 (mm)</b>	12.5
<b>F2 (mm)</b>	9.5
<b>F3 (mm)</b>	34.0
<b>F4 (mm)</b>	7.0
<b>F5 (mm)</b>	15.0
<b>F6 (mm)</b>	12.5
<b>G1 (mm)</b>	110
<b>G2 (mm)</b>	45
<b>H (mm)</b>	98
<b>H1 (mm)</b>	78
<b>L1 (mm)</b>	37.5
<b>L2 (mm)</b>	59.5
<b>M1 (mm)</b>	112

<b>M2 (mm)</b>	48
<b>N (mm)</b>	34
<b>O1 (mm)</b>	21
<b>O3 (mm)</b>	42
<b>P1</b>	M8x1.25
<b>P2</b>	M8x1.25
<b>P3</b>	M8x1.25
<b>Q (mm)</b>	20
<b>R (mm)</b>	16
<b>heavy (mm)</b>	10
<b>Y (mm)</b>	42
<b>Y1 (mm)</b>	4
<b>Y2 (mm)</b>	4.5
<b>Y3 (mm)</b>	3
<b>Y4 (mm)</b>	6
<b>X (mm)</b>	6.5
<b>X1 (mm)</b>	11
<b>X2 (mm)</b>	6.5
<b>J (mm)</b>	63
<b>K</b>	M6