

## Cylinders with integrated guide - Series QCT QCB

Product code: QCT2A020A085

Datasheet creation date: 09/03/2025 22:58

Check the most updated document online [click here](#)

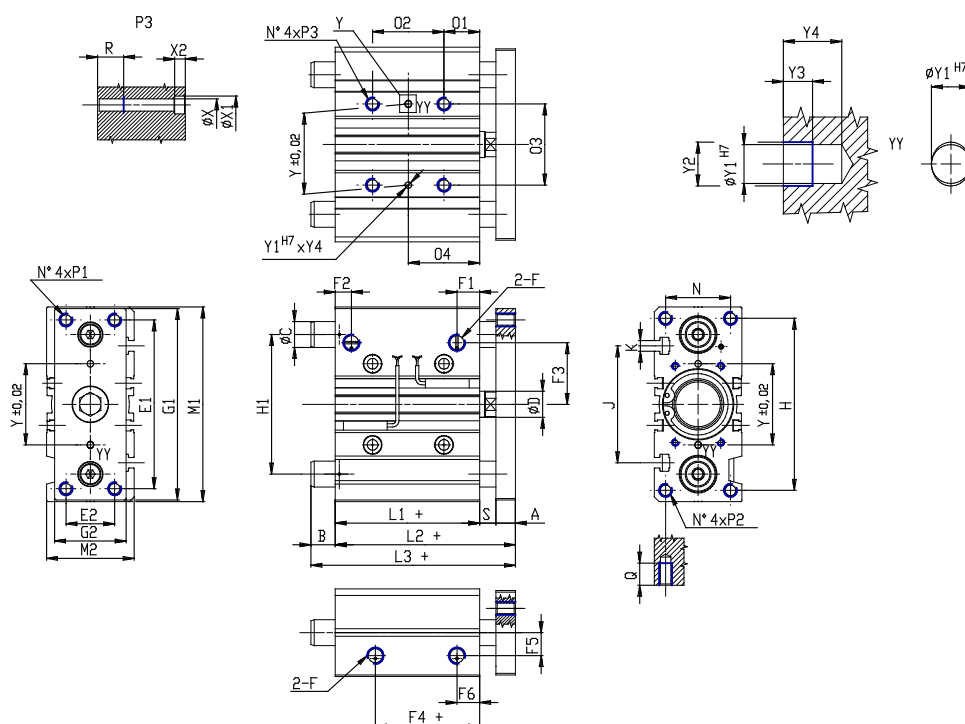


### TECHNICAL DATA

|                      |   |
|----------------------|---|
| <b>Series</b>        | QC  |
| <b>Version</b>       | T = sintered bronze bushes  |
| <b>Operation</b>     | 2 = double acting   |
| <b>Materials</b>     | A = anodized aluminium body rolled stainless steel 303 piston rod rolled stainless steel 420B columns for QTC |
| <b>Diameter (mm)</b> | 20  |
| <b>Construction</b>  | A = standard  |
| <b>Stroke type</b>   | intermediate  |
| <b>Stroke (mm)</b>   | 85  |

## Cylinders with integrated guide - Series QCT QCB

Product code: QCT2A020A085



### DIMENSIONS

|                |       |
|----------------|-------|
| <b>L3 (mm)</b> | 79.5  |
| <b>C (mm)</b>  | 12    |
| <b>B (mm)</b>  | 26.5  |
| <b>O2 (mm)</b> | 44    |
| <b>O4 (mm)</b> | 39    |
| <b>A (mm)</b>  | 10    |
| <b>D (mm)</b>  | 10    |
| <b>E1 (mm)</b> | 70    |
| <b>E2 (mm)</b> | 18    |
| <b>F</b>       | G 1/8 |
| <b>F1 (mm)</b> | 10.5  |
| <b>F2 (mm)</b> | 10.5  |
| <b>F3 (mm)</b> | 25.0  |
| <b>F4 (mm)</b> | 12.5  |
| <b>F5 (mm)</b> | 11.5  |
| <b>F6 (mm)</b> | 10.5  |
| <b>G1 (mm)</b> | 81    |
| <b>G2 (mm)</b> | 30    |
| <b>H (mm)</b>  | 72    |
| <b>H1 (mm)</b> | 54    |
| <b>L1 (mm)</b> | 37.0  |
| <b>L2 (mm)</b> | 53.0  |
| <b>M1 (mm)</b> | 83    |

|                   |        |
|-------------------|--------|
| <b>M2 (mm)</b>    | 36     |
| <b>N (mm)</b>     | 24     |
| <b>O1 (mm)</b>    | 17     |
| <b>O3 (mm)</b>    | 28     |
| <b>P1</b>         | M5x0.8 |
| <b>P2</b>         | M5x0.8 |
| <b>P3</b>         | M6x1   |
| <b>Q (mm)</b>     | 13     |
| <b>R (mm)</b>     | 12     |
| <b>heavy (mm)</b> | 6      |
| <b>Y (mm)</b>     | 28     |
| <b>Y1 (mm)</b>    | 3      |
| <b>Y2 (mm)</b>    | 3.5    |
| <b>Y3 (mm)</b>    | 3      |
| <b>Y4 (mm)</b>    | 6      |
| <b>X (mm)</b>     | 5.5    |
| <b>X1 (mm)</b>    | 9      |
| <b>X2 (mm)</b>    | 5.0    |
| <b>J (mm)</b>     | 44     |
| <b>K</b>          | M5     |