

## Cylinders with integrated guide - Series QCT QCB

Product code: QCT2A025A010

Datasheet creation date: 09/03/2025 22:59

Check the most updated document online [click here](#)

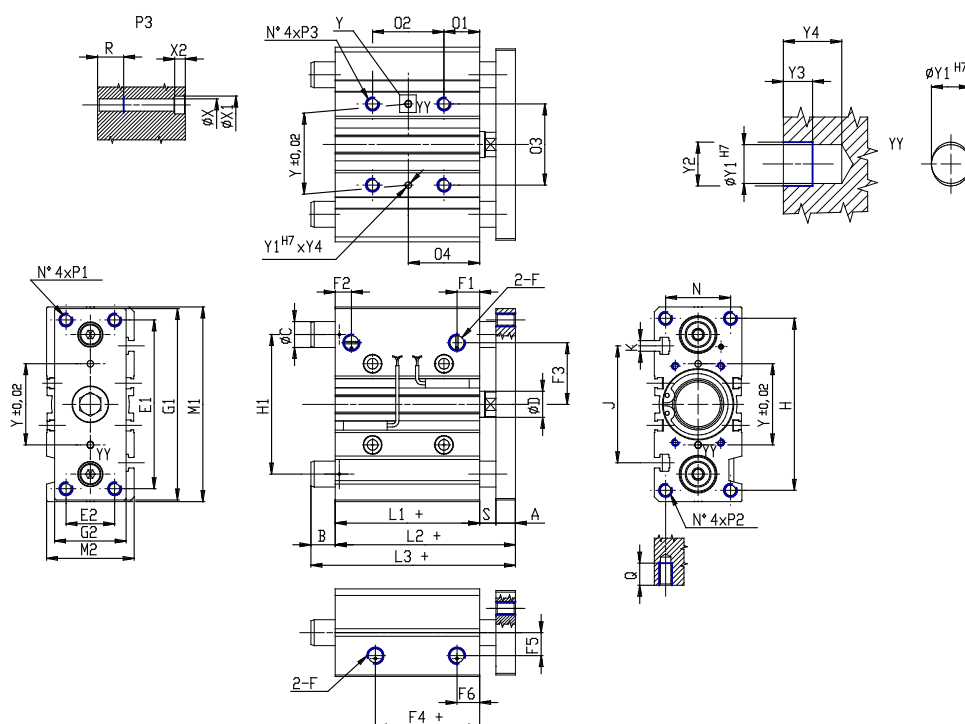


### TECHNICAL DATA

|                      |   |
|----------------------|---|
| <b>Series</b>        | QC  |
| <b>Version</b>       | T = sintered bronze bushes  |
| <b>Operation</b>     | 2 = double acting   |
| <b>Materials</b>     | A = anodized aluminium body rolled stainless steel 303 piston rod rolled stainless steel 420B columns for QTC |
| <b>Diameter (mm)</b> | 25  |
| <b>Construction</b>  | A = standard  |
| <b>Stroke type</b>   | intermediate  |
| <b>Stroke (mm)</b>   | 10  |

## Cylinders with integrated guide - Series QCT QCB

Product code: QCT2A025A010



### DIMENSIONS

|         |       |
|---------|-------|
| L3 (mm) | 80.5  |
| C (mm)  | 16    |
| B (mm)  | 27.0  |
| O2 (mm) | 24    |
| O4 (mm) | 29    |
| A (mm)  | 10    |
| D (mm)  | 12    |
| E1 (mm) | 78    |
| E2 (mm) | 26    |
| F       | G 1/8 |
| F1 (mm) | 11.5  |
| F2 (mm) | 8.0   |
| F3 (mm) | 28.5  |
| F4 (mm) | 12.5  |
| F5 (mm) | 13.5  |
| F6 (mm) | 11.5  |
| G1 (mm) | 91    |
| G2 (mm) | 40    |
| H (mm)  | 82    |
| H1 (mm) | 64    |
| L1 (mm) | 37.5  |
| L2 (mm) | 53.5  |
| M1 (mm) | 93    |

|            |      |
|------------|------|
| M2 (mm)    | 42   |
| N (mm)     | 30   |
| O1 (mm)    | 17   |
| O3 (mm)    | 34   |
| P1         | M6x1 |
| P2         | M6x1 |
| P3         | M6x1 |
| Q (mm)     | 15   |
| R (mm)     | 12   |
| heavy (mm) | 6    |
| Y (mm)     | 34   |
| Y1 (mm)    | 4    |
| Y2 (mm)    | 4.5  |
| Y3 (mm)    | 3    |
| Y4 (mm)    | 6    |
| X (mm)     | 5.5  |
| X1 (mm)    | 9    |
| X2 (mm)    | 5.0  |
| J (mm)     | 50   |
| K          | M5   |