

## Cylinders with integrated guide - Series QCT QCB

Product code: QCT2A032A140

Datasheet creation date: 09/03/2025 23:01

Check the most updated document online [click here](#)

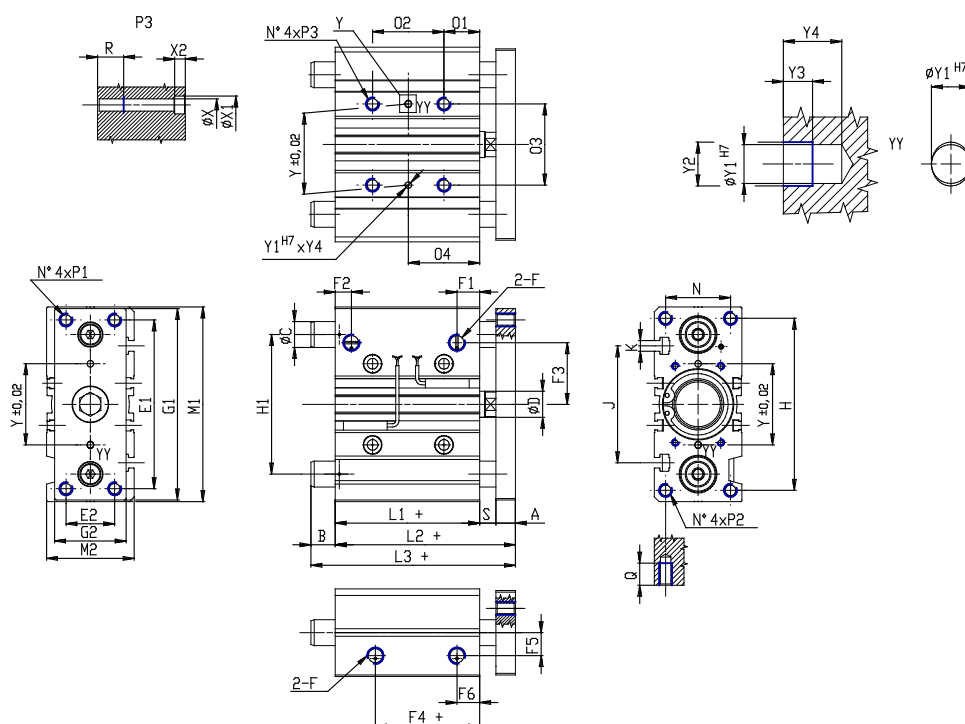


### TECHNICAL DATA

|                      |   |
|----------------------|---|
| <b>Series</b>        | QC  |
| <b>Version</b>       | T = sintered bronze bushes  |
| <b>Operation</b>     | 2 = double acting   |
| <b>Materials</b>     | A = anodized aluminium body rolled stainless steel 303 piston rod rolled stainless steel 420B columns for QTC |
| <b>Diameter (mm)</b> | 32  |
| <b>Construction</b>  | A = standard  |
| <b>Stroke type</b>   | intermediate  |
| <b>Stroke (mm)</b>   | 140   |

## Cylinders with integrated guide - Series QCT QCB

Product code: QCT2A032A140



### DIMENSIONS

|                |       |
|----------------|-------|
| <b>L3 (mm)</b> | 91.5  |
| <b>C (mm)</b>  | 20    |
| <b>B (mm)</b>  | 32.0  |
| <b>O2 (mm)</b> | 124   |
| <b>O4 (mm)</b> | 83    |
| <b>A (mm)</b>  | 12    |
| <b>D (mm)</b>  | 16    |
| <b>E1 (mm)</b> | 96    |
| <b>E2 (mm)</b> | 30    |
| <b>F</b>       | G 1/8 |
| <b>F1 (mm)</b> | 12.5  |
| <b>F2 (mm)</b> | 9.5   |
| <b>F3 (mm)</b> | 34.0  |
| <b>F4 (mm)</b> | 7.0   |
| <b>F5 (mm)</b> | 15.0  |
| <b>F6 (mm)</b> | 12.5  |
| <b>G1 (mm)</b> | 110   |
| <b>G2 (mm)</b> | 45    |
| <b>H (mm)</b>  | 98    |
| <b>H1 (mm)</b> | 78    |
| <b>L1 (mm)</b> | 37.5  |
| <b>L2 (mm)</b> | 59.5  |
| <b>M1 (mm)</b> | 112   |

|                   |         |
|-------------------|---------|
| <b>M2 (mm)</b>    | 48      |
| <b>N (mm)</b>     | 34      |
| <b>O1 (mm)</b>    | 21      |
| <b>O3 (mm)</b>    | 42      |
| <b>P1</b>         | M8x1.25 |
| <b>P2</b>         | M8x1.25 |
| <b>P3</b>         | M8x1.25 |
| <b>Q (mm)</b>     | 20      |
| <b>R (mm)</b>     | 16      |
| <b>heavy (mm)</b> | 10      |
| <b>Y (mm)</b>     | 42      |
| <b>Y1 (mm)</b>    | 4       |
| <b>Y2 (mm)</b>    | 4.5     |
| <b>Y3 (mm)</b>    | 3       |
| <b>Y4 (mm)</b>    | 6       |
| <b>X (mm)</b>     | 6.5     |
| <b>X1 (mm)</b>    | 11      |
| <b>X2 (mm)</b>    | 6.5     |
| <b>J (mm)</b>     | 63      |
| <b>K</b>          | M6      |