

Series QX - Twin Cylinders

Product code: QXB3A010A020

Datasheet creation date: 10/03/2025 00:13

Check the most updated document online [click here](#)

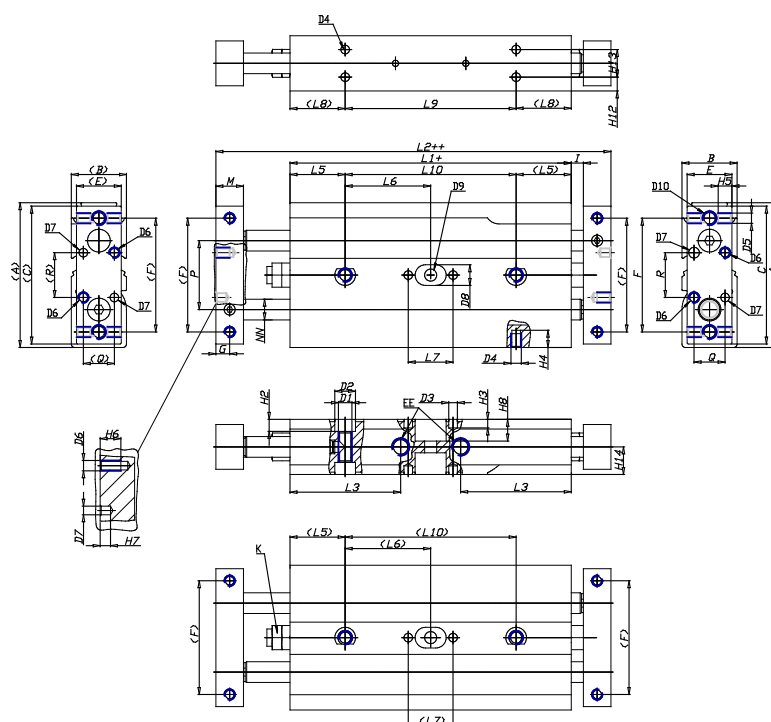


TECHNICAL DATA

Series (mm)	QX
Version (mm)	B = linear ball bearings
Operation (mm)	3 = through-rod (double-flange), radial pressure supply
Materials (mm)	A = anodized aluminium body, rolled stainless steel 303 piston rod
Diameter (mm)	10
Construction (mm)	A = standard
Stroke cylinder (mm)	20

Series QX - Twin Cylinders

Product code: QXB3A010A020



DIMENSIONS

A (mm)	42
B (mm)	16
C (mm)	40
E (mm)	13
F (mm)	33
G (mm)	4
I (mm)	3.5
M (mm)	8
Q (mm)	9
R (mm)	13
L1 (mm)	72.0
L2 (mm)	95.0
L3 (mm)	32.1
L4 (mm)	8.5
L5 (mm)	16
L6 (mm)	30.0
L7 (mm)	13
L8 (mm)	16
L9 (mm)	59.6
L10 (mm)	59.6
L11 (mm)	31.0
H2 (mm)	3.5
H3 (mm)	2.5

H4 (mm)	4.0
H5 (mm)	6.5
H6 (mm)	8
H7 (mm)	3
H8 (mm)	6.3
H10 (mm)	6.5
H11 (mm)	8.0
H12 (mm)	4.0
H13 (mm)	8
H14 (mm)	8.0
D1	M4
D2 (mm)	6.0
D3 (mm)	2.5
D4 (mm)	M3
D5	M3
D6	M3
D7 (mm)	2.5
D8 (mm)	6
D9 (mm)	3.5
D10	M4
NN (mm)	6
EE	M5
J (mm)	4.3