

Series QX - Twin Cylinders

Product code: QXB3A016A030

Datasheet creation date: 10/03/2025 00:13

Check the most updated document online [click here](#)

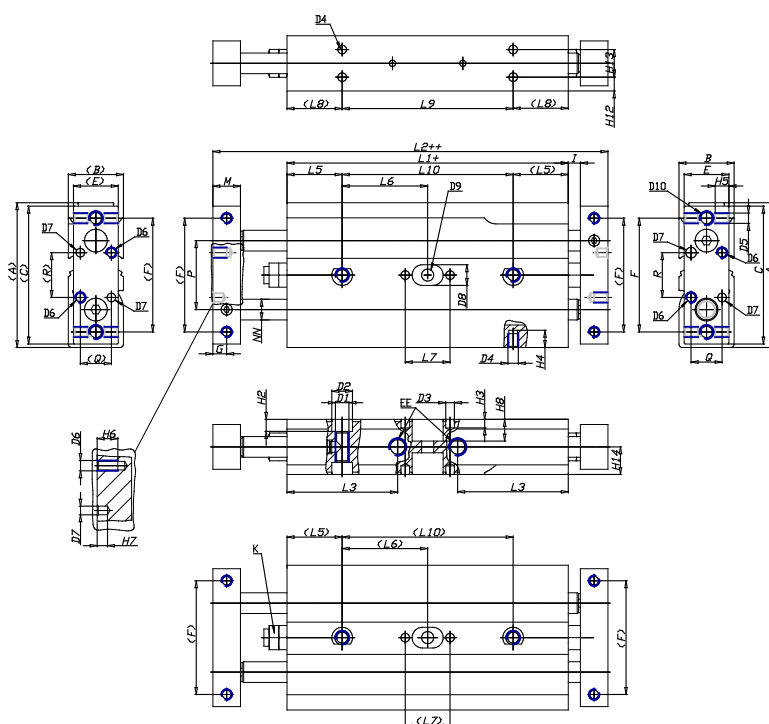


TECHNICAL DATA

| | |
|----------------------|--|
| Series (mm) | QX |
| Version (mm) | B = linear ball bearings |
| Operation (mm) | 3 = through-rod (double-flange), radial pressure supply |
| Materials (mm) | A = anodized aluminium body, rolled stainless steel 303 piston rod |
| Diameter (mm) | 16 |
| Construction (mm) | A = standard |
| Stroke cylinder (mm) | 30 |

Series QX - Twin Cylinders

Product code: QXB3A016A030



DIMENSIONS

| | |
|----------|-------|
| A (mm) | 58 |
| B (mm) | 21 |
| C (mm) | 56 |
| E (mm) | 19 |
| F (mm) | 42 |
| G (mm) | 5 |
| I (mm) | 2.5 |
| M (mm) | 10 |
| Q (mm) | 11 |
| R (mm) | 13 |
| L1 (mm) | 86.6 |
| L2 (mm) | 111.6 |
| L3 (mm) | 34.0 |
| L4 (mm) | 8.5 |
| L5 (mm) | 20 |
| L6 (mm) | 38.3 |
| L7 (mm) | 13 |
| L8 (mm) | 30 |
| L9 (mm) | 56.6 |
| L10 (mm) | 76.6 |
| L11 (mm) | 52.0 |
| H2 (mm) | 4.5 |
| H3 (mm) | 4.0 |

| | |
|----------|------|
| H4 (mm) | 5.0 |
| H5 (mm) | 6.0 |
| H6 (mm) | 6 |
| H7 (mm) | 3 |
| H8 (mm) | 0.0 |
| H10 (mm) | 10.5 |
| H11 (mm) | 16.5 |
| H12 (mm) | 10.5 |
| H13 (mm) | 0 |
| H14 (mm) | 5.5 |
| D1 | M5 |
| D2 (mm) | 7.5 |
| D3 (mm) | 2.5 |
| D4 (mm) | M3 |
| D5 | M4 |
| D6 | M3 |
| D7 (mm) | 2.5 |
| D8 (mm) | 0 |
| D9 (mm) | 0.0 |
| D10 | M5 |
| NN (mm) | 8 |
| EE | M5 |
| J (mm) | 0.0 |