

Series QX - Twin Cylinders

Product code: QXB3A032A030

Datasheet creation date: 10/03/2025 00:15

Check the most updated document online [click here](#)

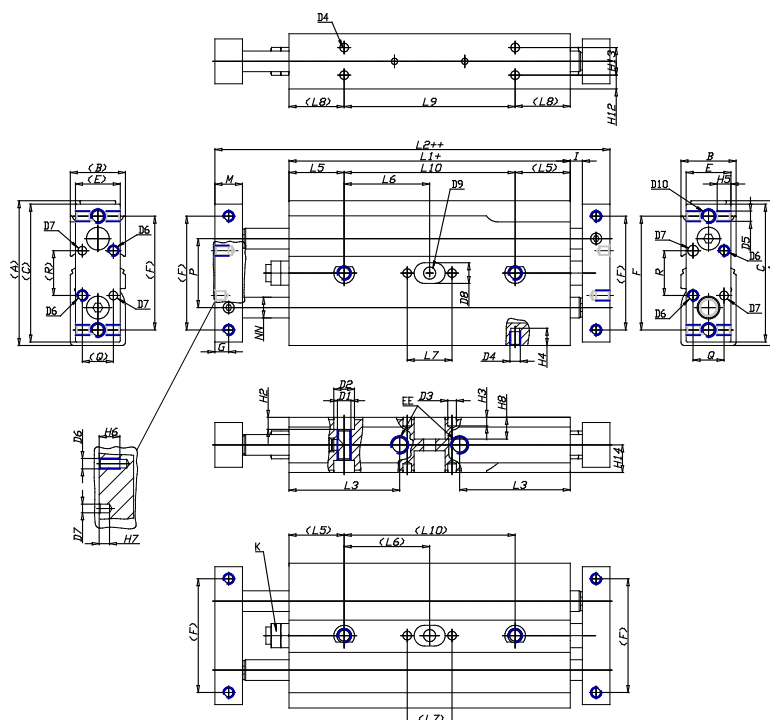


TECHNICAL DATA

Series (mm)	QX
Version (mm)	B = linear ball bearings
Operation (mm)	3 = through-rod (double-flange), radial pressure supply
Materials (mm)	A = anodized aluminium body, rolled stainless steel 303 piston rod
Diameter (mm)	32
Construction (mm)	A = standard
Stroke cylinder (mm)	30

Series QX - Twin Cylinders

Product code: QXB3A032A030



DIMENSIONS

A (mm)	94
B (mm)	37
C (mm)	92
E (mm)	35
F (mm)	45
G (mm)	8
I (mm)	4.0
M (mm)	16
Q (mm)	16
R (mm)	18
L1 (mm)	115.6
L2 (mm)	155.6
L3 (mm)	46.5
L4 (mm)	12.0
L5 (mm)	30
L6 (mm)	42.8
L7 (mm)	20
L8 (mm)	30
L9 (mm)	85.6
L10 (mm)	85.6
L11 (mm)	47.0
H2 (mm)	6.5
H3 (mm)	4.0

H4 (mm)	7.5
H5 (mm)	7.5
H6 (mm)	8
H7 (mm)	4
H8 (mm)	0.0
H10 (mm)	8.5
H11 (mm)	28.5
H12 (mm)	8.5
H13 (mm)	20
H14 (mm)	18.5
D1	M8
D2 (mm)	10.5
D3 (mm)	4.0
D4 (mm)	M5
D5	M5
D6	M4
D7 (mm)	4.0
D8 (mm)	0
D9 (mm)	0.0
D10	M6
NN (mm)	16
EE	G1/8
J (mm)	0.0