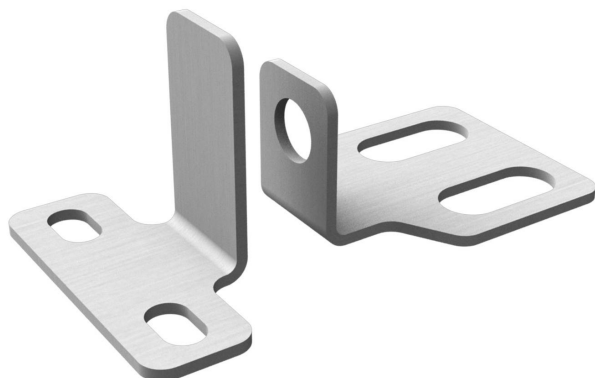


## Kit to fix the inductive sensor - Mod. SIS

Product code: SIS-M5-50/65

Datasheet creation date: 07/03/2025 15:41

Check the most updated document online [click here](#)

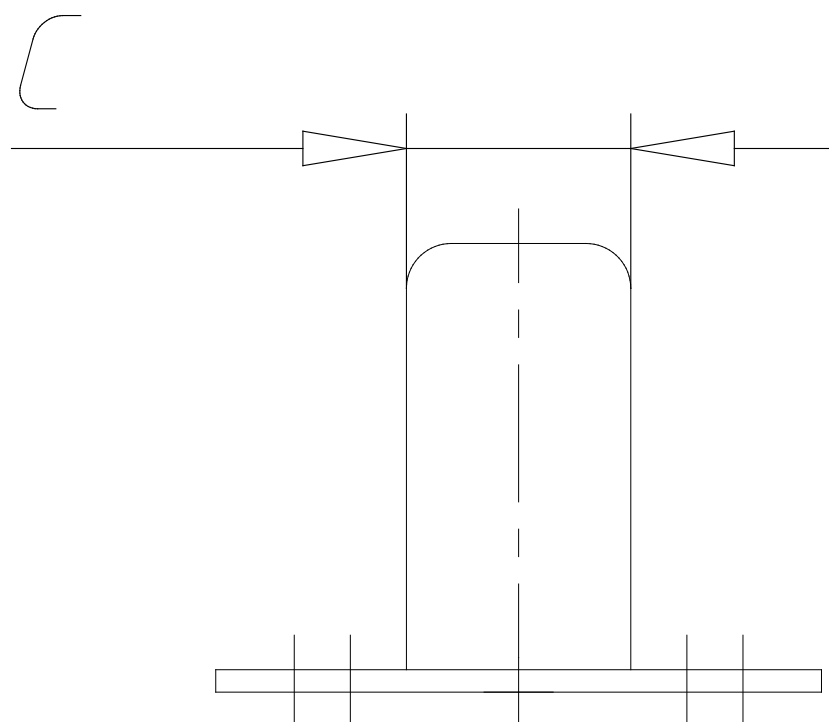


### TECHNICAL DATA

Mod.	SIS-M5-50/65
Size	50-65

## Kit to fix the inductive sensor - Mod. SIS

Product code: SIS-M5-50/65



### DIMENSIONS

<b>A (mm)</b>	27
<b>C (mm)</b>	10
<b>D (mm)</b>	20
<b>E (mm)</b>	3.5
<b>H1 (mm)</b>	13
<b>H2 (mm)</b>	8.5
<b>I (mm)</b>	5.5
<b>L (mm)</b>	22
<b>M (mm)</b>	12
<b>N1 (mm)</b>	14.5
<b>N2 (mm)</b>	21
<b>Ø O (mm)</b>	5.5
<b>P (mm)</b>	8
<b>Q (mm)</b>	14.0
<b>R (mm)</b>	26
<b>S (mm)</b>	10
<b>Weight (g)</b>	10