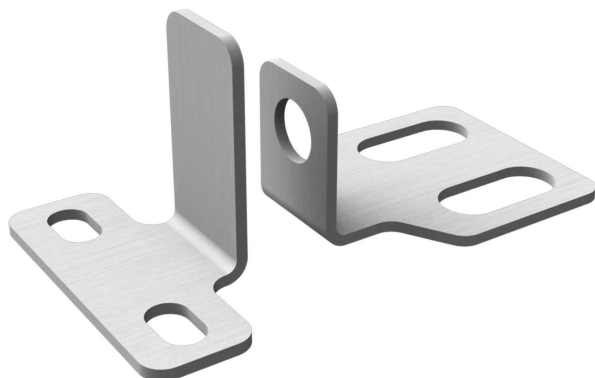


Kit to fix the inductive sensor - Mod. SIS

Product code: SIS-M5-80

Datasheet creation date: 07/03/2025 15:41

Check the most updated document online [click here](#)

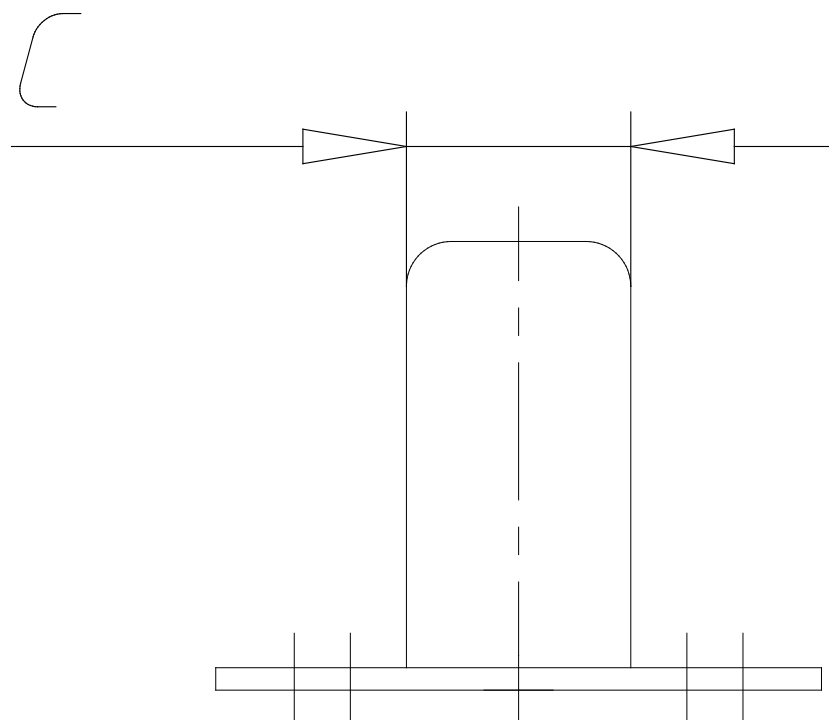


■ TECHNICAL DATA

Mod.	SIS-M5-80
Size	80

Kit to fix the inductive sensor - Mod. SIS

Product code: SIS-M5-80



DIMENSIONS

A (mm)	45
C (mm)	15
D (mm)	20
E (mm)	4.5
H1 (mm)	16
H2 (mm)	10.5
I (mm)	5.5
L (mm)	22
M (mm)	12
N1 (mm)	14.5
N2 (mm)	21
Ø O (mm)	5.5
P (mm)	8
Q (mm)	14.0
R (mm)	26
S (mm)	10
Weight (g)	15