

## Direct operated solenoid valves - Series W

Product code: W000-303-E12-OX2

Datasheet creation date: 20/05/2026 04:06

Check the most updated document online [click here](#)

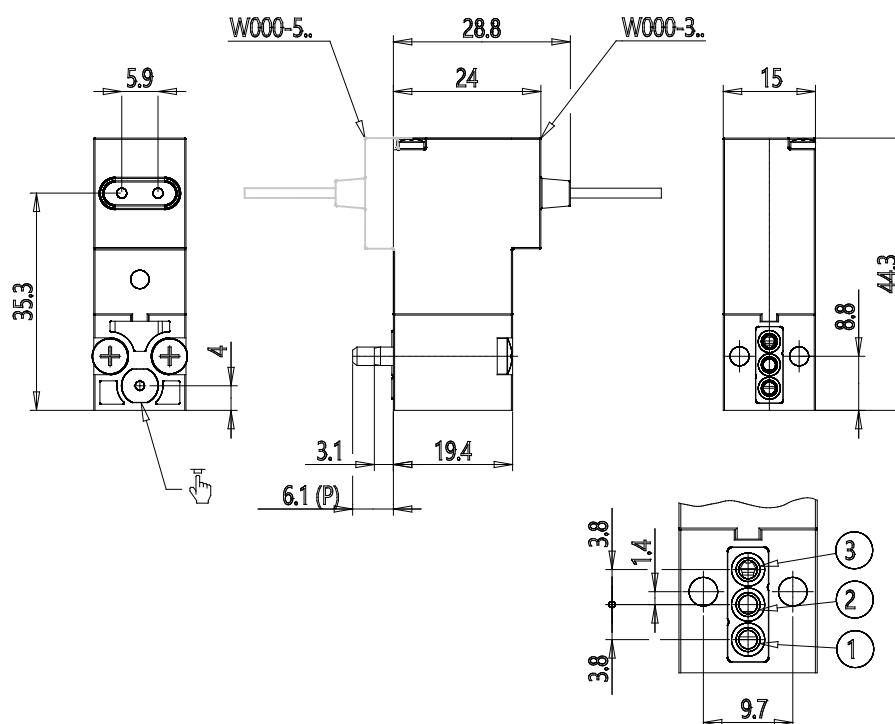


### TECHNICAL DATA

<b>Series</b>	W
<b>Body execution</b>	0 = interface
<b>Number of seats</b>	00 = ISO 15218 interface
<b>Number of ways - Functions</b>	3 = 3/2 way - NC
<b>Valve connections</b>	0 = ISO 15218 interface
<b>Orifice diameter</b>	3 = Ø 1.5 mm
<b>Materials</b>	E = PBT body - EPDM seals
<b>Electrical connection</b>	1 = cables 300 mm
<b>Voltage - Absorbed power</b>	2 = 12 V DC - 2 W
<b>Fixing</b>	= fixing screws for metal
<b>Use with oxygen</b>	OX2 = for use with oxygen – cleanliness level according to ASTM G93-03 Standard Level B

## Direct operated solenoid valves - Series W

Product code: W000-303-E12-OX2



### DIMENSIONS

<b>Series</b>	W
<b>Body execution</b>	0 = interface
<b>Number of seats</b>	00 = ISO 15218 interface
<b>Number of ways - Functions</b>	3 = 3/2 way - NC
<b>Valve connections</b>	0 = ISO 15218 interface
<b>Orifice diameter</b>	3 = Ø 1.5 mm
<b>Materials</b>	E = PBT body - EPDM seals
<b>Electrical connection</b>	1 = cables 300 mm
<b>Voltage - Absorbed power</b>	2 = 12 V DC - 2 W
<b>Fixing</b>	= fixing screws for metal
<b>Use with oxygen</b>	OX2 = for use with oxygen – cleanliness level according to ASTM G93-03 Standard Level B