

BOOST YOUR PERFORMANCE

Components, Systems
and Technologies
for Every Industrial Sector



WHERE YOUR INNOVATION MEETS OUR TECHNOLOGY

PROPORTIONAL



PNEUMATIC



ELECTROMECHANIC



ELECTRONIC

SOFTWARE

ADVANCED
CONNECTED TECHNOLOGIES

BOOST YOUR PERFORMANCE

Thanks to our cross-sectoral know-how, ranging from mechanical and electronic design, advanced modelling and simulation up to software programming and complex systems integration, we are able to offer fully integrated solutions. To maximise components and solutions, we make use of many technologies including advanced robotics, artificial intelligence, predictive maintenance and augmented reality.

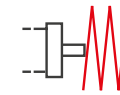
The combination of experience and testing cutting-edge technologies leads to our innovative solutions, ever more intelligent and interconnected for an advanced and sustainable industry.

SERIES 32: INTEGRATED AUTO-CUSHIONING. MAXIMUM EFFICIENCY, ZERO ADJUSTMENTS.

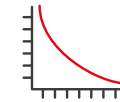
The cylinders Series 32, with their extreme compactness, are suitable for installation in confined spaces. They automatically adapt to load and speed conditions, ensuring smooth and uniform deceleration without requiring manual adjustments.



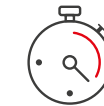
BENEFITS



Automatic cushioning
under any conditions



Consistent and safe
deceleration



Quick installation,
no adjustments needed



Safe and tamper-proof
system

MAIN TECHNICAL FEATURES

<i>Diameters</i>	from 32 mm to 100 mm
<i>Versions</i>	CM (self-cushioned with male-threaded rod) CF (self-cushioned with female-threaded rod)

SERIES MD SAFEMAX: WHERE PERFORMANCE MEETS SAFETY

The safety valve MD Safemax, certified ISO 13849-1:2025, ensures fast and reliable exhaust of the system in case of emergencies. It integrates a sensor for continuous monitoring of the spool position and valve status.



BENEFITS



Compliant with Machinery Directive 2006/42/C



Easy integration with FRL Series MD Units



Solution to achieve up to Performance Level E

MAIN TECHNICAL FEATURES

Achievable Performance Level (PL)

Single version	Category 2 up to PL d
Double version	Category 4 up to PL e

Flow rate

Single version	1900 NL/min (ΔP 1)
Double version	1420 NL/min (ΔP 1)

SERIES FSX: SMART CONTROL, MAXIMUM EFFICIENCY

The new flow sensor Series FSX is a smart solution for the precise monitoring of energy consumption and system performance. Thanks to intelligent technology and data transmission via Ethernet, it enables real-time analysis supported by AI algorithms. Flexible, modular, and integrable into the Series MX2 and MX3, it ensures reliable measurements up to 10,000 L/min.

It is ideal for optimizing processes, reducing waste, and improving efficiency in line with the Industry 5.0 vision.



BENEFITS



Continuous monitoring of pressure, flow, temperature, and humidity



Real-time analysis of energy consumption, dew point, and accumulated air flow



Reduction of consumption and operating costs

MAIN TECHNICAL FEATURES

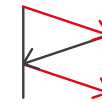
Flow rate	2.000 - 5.000 - 10.000 L/min (ANR)
-----------	------------------------------------

SERIES FS: REAL-TIME MONITORING, WITHOUT COMPROMISE

The Series FS is a range of compact flow sensors, ideal for real-time monitoring of flow rates from 0.5 to 2000 L/min. Available in three sizes (17, 30, 35), there is also a version with integrated pressure sensor. The rotatable display ensures clear and immediate data reading, including the accumulated flow.



BENEFITS



Constant and precise
flow monitoring



Easy and immediate
data reading



Easy installation
in confined spaces

MAIN TECHNICAL FEATURES

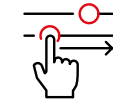
Sizes	17, 30, 35
Flow rate	from 0.5 to 2000 L/min

SERIES CSPT: REAL-TIME DATA. EFFICIENCY IN EVERY GRIP.

The collaborative gripper Series CSPT, equipped with integrated valves and sensors, performs smart functions such as force and position monitoring. It collects and transmits data in real-time, improving process control. It ensures high operational quality, reduces cycle times, and increases production efficiency.



BENEFITS



Precise control of force and position



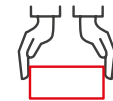
Automatic measurement of the workpiece



Gesture recognition



Workpiece presence detection



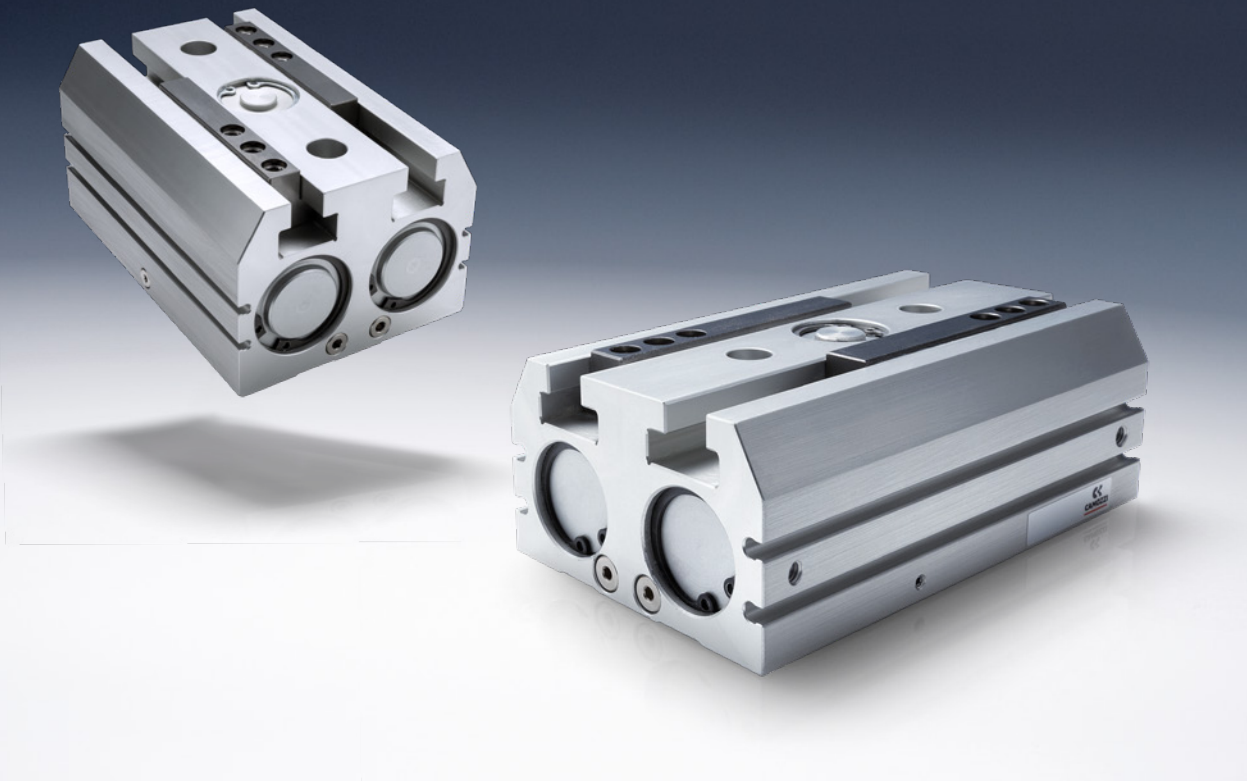
Anti-slip grip function

MAIN TECHNICAL FEATURES

Maximum force at 6 bar	165 N
Total stroke	80 mm
Repeatability	±0.02
Communication protocol	Modbus RSTU (485)

SERIES CGPW: HIGH PERFORMANCE. COMPACT SIZE.

Designed to maximize efficiency in confined spaces, this parallel gripper is ideal for palletizing and pick & place operations in the material handling and packaging sectors. The self-centering jaws slide on internal guides, allowing for precise opening with minimal space requirements. Its compact and robust design enables the handling of heavy loads and the application of significant opening and closing forces, while maintaining a small footprint. High reliability is ensured by the T-guide, which provides resistance to external loads and excellent motion repeatability.



BENEFITS



Robust and compact design



High opening/closing repeatability



High resistance to external loads

MAIN TECHNICAL FEATURES

Sizes	25, 40
Total force	500 ÷ 1000 N
Total stroke	40 ÷ 160 mm
Version	Double-acting

PNEUMATIC ACTUATION



- International standard cylinders
- Compact cylinders
- Stainless steel cylinders
- Guided cylinders
- Cylinders not according standards
- Rotary cylinders
- Rodless cylinders
- Hydrochecks, Rod lock, Shock absorbers

OUR FLAGSHIP RANGE

SERIES 63 / ISO 15552 END LOCK cylinder



- Automatic rod locking in the end position



Application-oriented



Modular solution



Fast configuration



Efficiency



Safety

SERIES 23 / ISO 6432 cylinder with auto-cushioning



- Automatic cushioning without manual adjustment

SERIES 6FP / Positioning feedback cylinder ISO 15552



- Standard cylinder equipped with a linear position transducer integrated into the rod

SERIES 90, 94, 95, 97 / Stainless steel cylinders



- Stainless steel AISI 316 – AISI 304
- Compliant with ISO 15552 – ISO 6432 standards

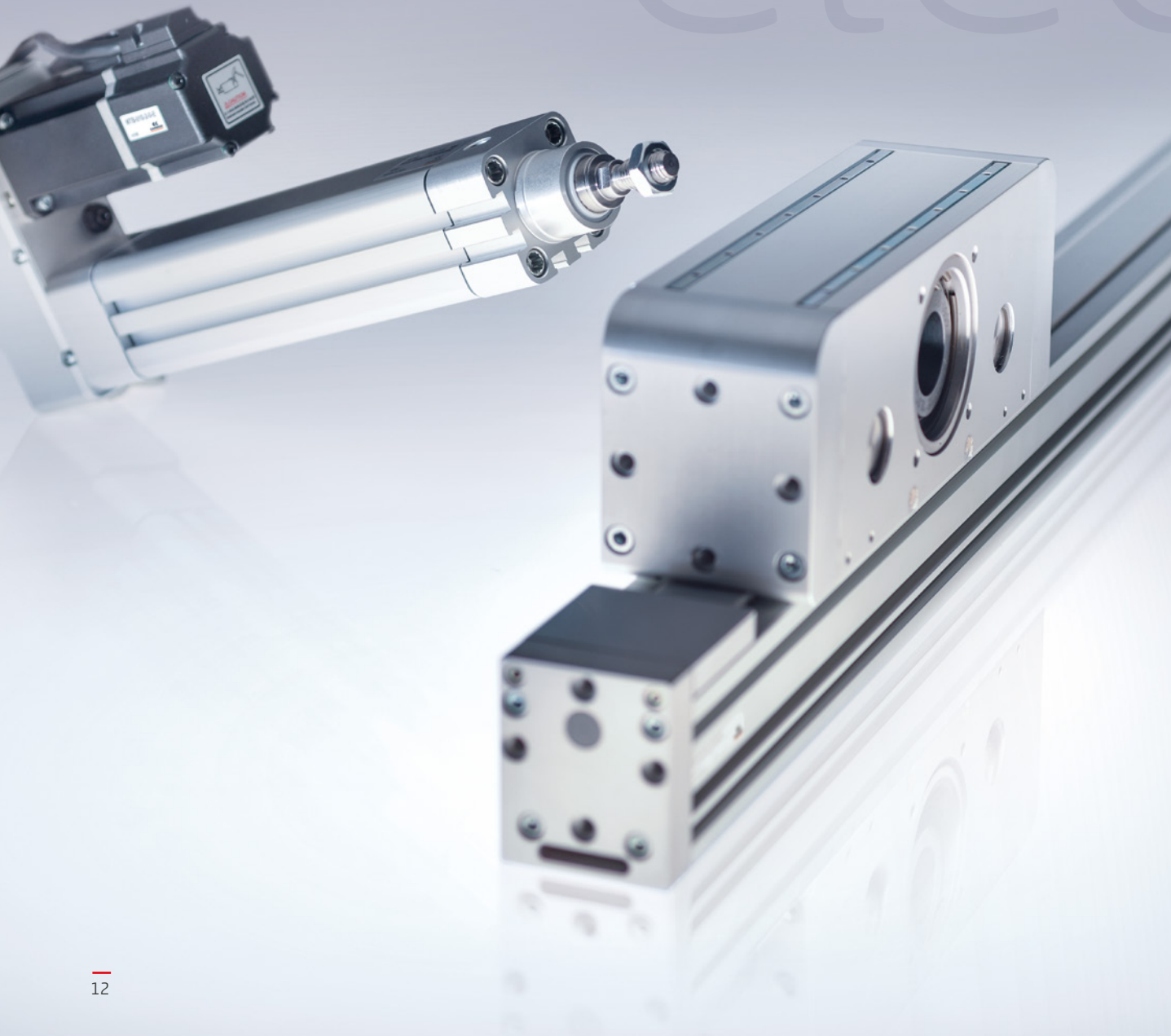


Clean design



High corrosion resistance

ELECTRIC ACTUATION







- Electromechanical cylinders
- Electromechanical axes
- Drives
- Motors
- Gearboxes and Couplings

OUR FLAGSHIP RANGE



SERIES 3E / Compact electromechanical cylinder





Sizes	20, 32
Max stroke	500mm
Max force	1000 N
Repeatability	± 0,02 mm

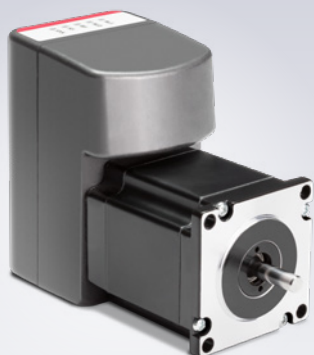
-  **Compactness and lightweight design**
-  **Easy to use and integrate**
-  **Interchangeable with pneumatic solutions**
-  **Multi-positioning solution**



SERIES 5ES / Electric linear axis





Sizes	50, 65, 80
Max stroke	6000 mm
Versions	Belt-driven or ball screw-driven
Guide	Ball bearing guides

-  **Flexibility**
-  **Modularity**
-  **High stiffness**
-  **High efficiency**

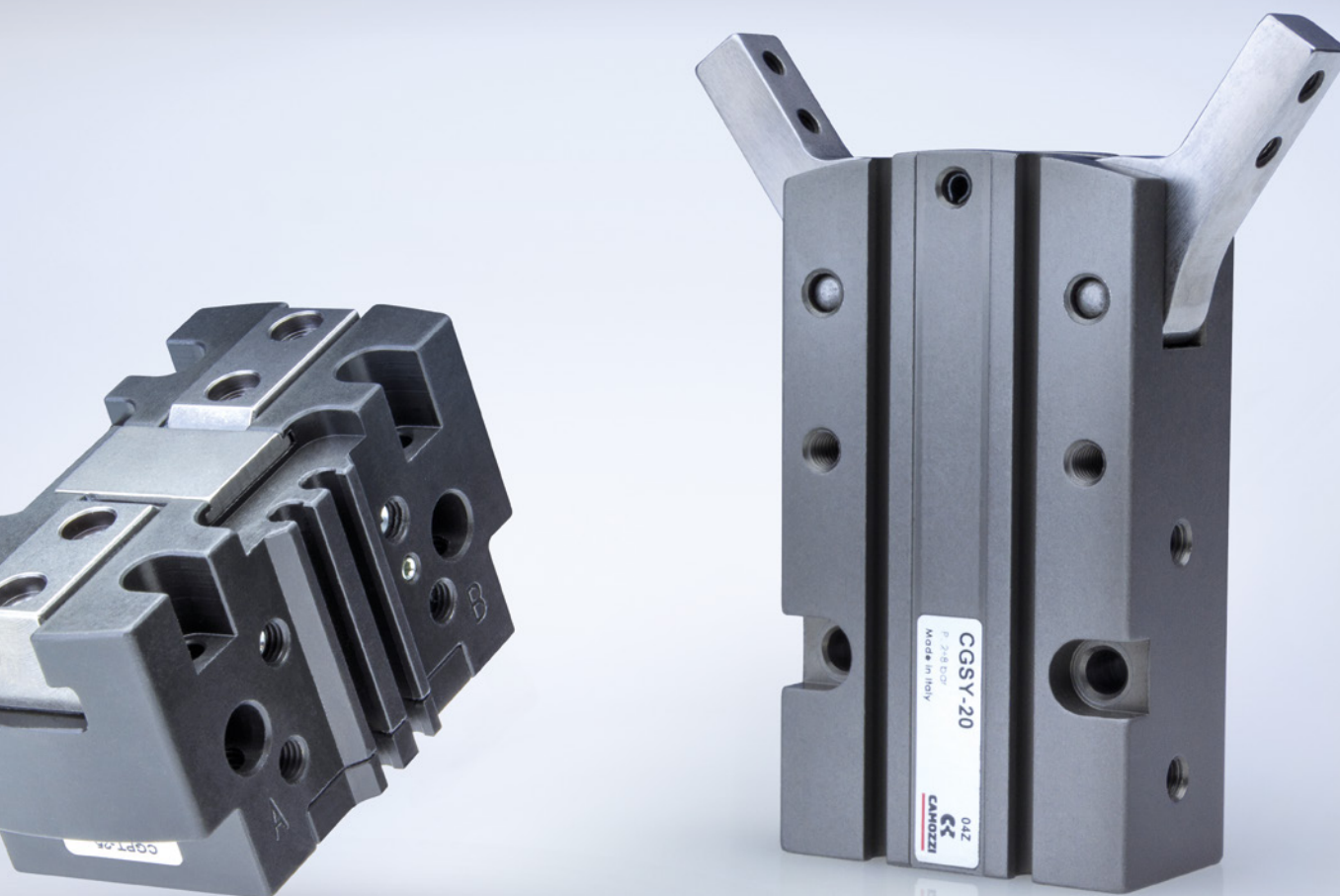


SERIES DRVI / Integrated drive with vector control

Sizes	NEMA 23, 24
Motor type	Stepper, BLDC
Max speed	Up to 3000 rpm
Protection	IP65

-  **Energy efficiency**
-  **Versatility**
-  **Integrated solution**
-  **Precise positioning**

HANDLING



- Angular grippers
- Parallel grippers
- Radial grippers
- Three jaw grippers
- Sprue grippers
- Collaborative grippers
- Smart collaborative grippers
- Suction pads
- Ejectors
- Vacuum accessories
- Vacuum filters

OUR FLAGSHIP RANGE



SERIES CGPT / Parallel gripper with T-shaped sliding guide

Sizes	16, 20, 25, 32, 40, 50, 63, 80 mm
Total force	70 ÷ 4006 N
Stroke per jaw	2,5 ÷ 10 mm
Versions	Single-acting and double-acting



Robust, compact,
and lightweight design



High resistance to external loads
thanks to the T-shaped sliding guide



SERIES CSSP / Collaborative parallel gripper

Maximum closing force (6 bar)	214 N
Maximum opening force (6 bar)	188 N
Stroke per jaw	6 mm



Compliant with ISO TS 15066



Compatible with major
collaborative robots



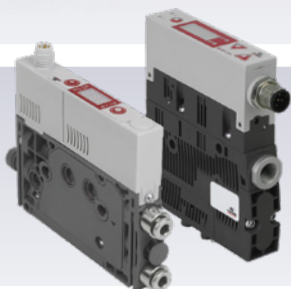
Robust, compact, and lightweight design



Payload optimization



Intuitive configuration



SERIES VES, VEN, VEQ / Compact Ejectors

- Modular and compact, with integrated valves and sensors for suction, release, and control



Energy efficiency



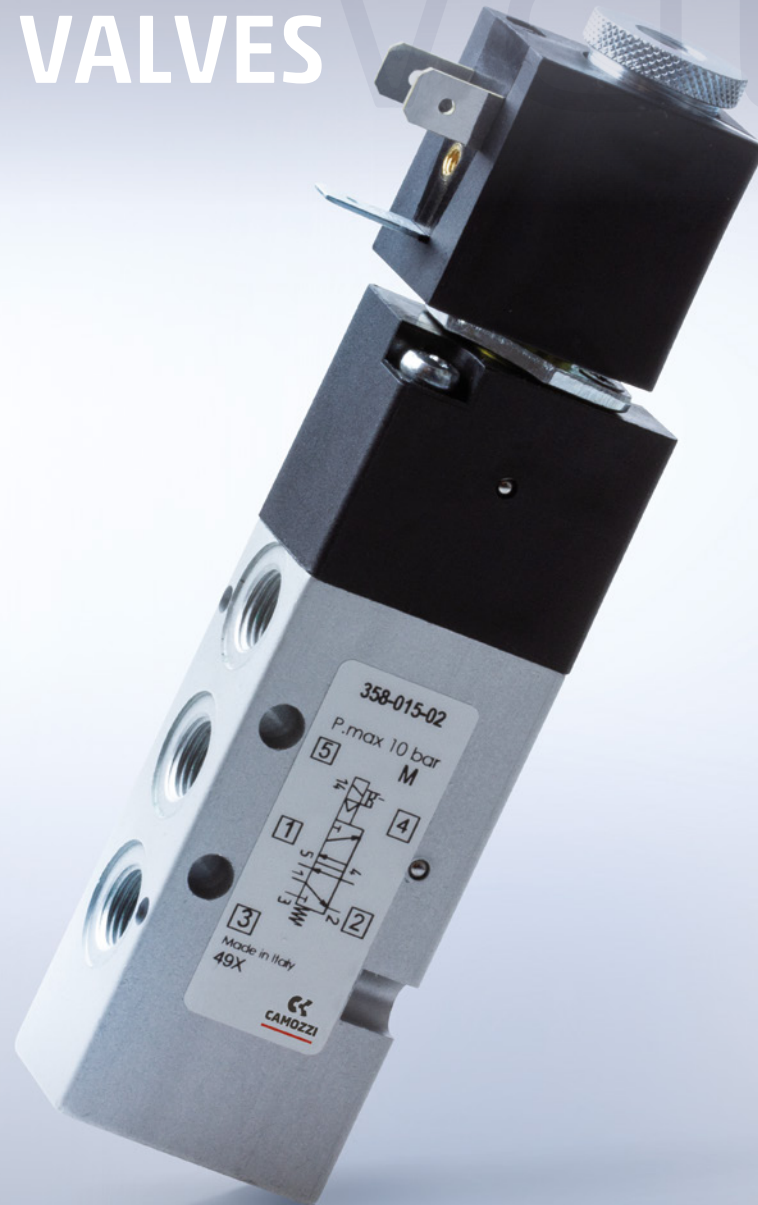
IO-Link version
available



SERIES VPOL, VPCL, VPCM, VPCN, VPCO, VPCQ, VPCF / Suction Pads

Materials:	Shapes:	Versions:
NBR, Silicone, Elastodur ED-65	Round, Oval	Flat, Bellows (1.5 – 4.5 folds)

VALVES AND SOLENOID VALVES



- Direct and indirect acting 2/2, 3/2-way solenoid valves
- Solenoid, pneumatic and manifold valves
- Mechanical and manual valves
- Logic valves
- Automatic valves
- Flow control valves
- Silencers

OUR FLAGSHIP RANGE



SERIES KL –KLE / Direct acting solenoid valve

Size	10 mm
Functions	2/2 NC-NO, 3/2 NC-NO-UNI
Orifice diameter	0.6 ... 1.6 mm



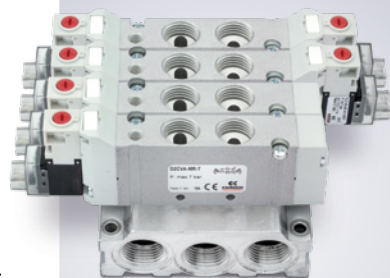
Compact design and lightweight



Easy and flexible system integration



Energy efficiency



SERIES D / VA version

- Individual or manifold use
- Pneumatic and electric versions available



Robust design



Compact dimensions



SERIES D / VB version

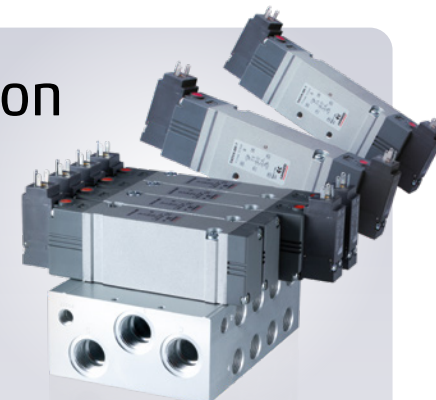
- Manifold mounting
- Electric version



Modularity

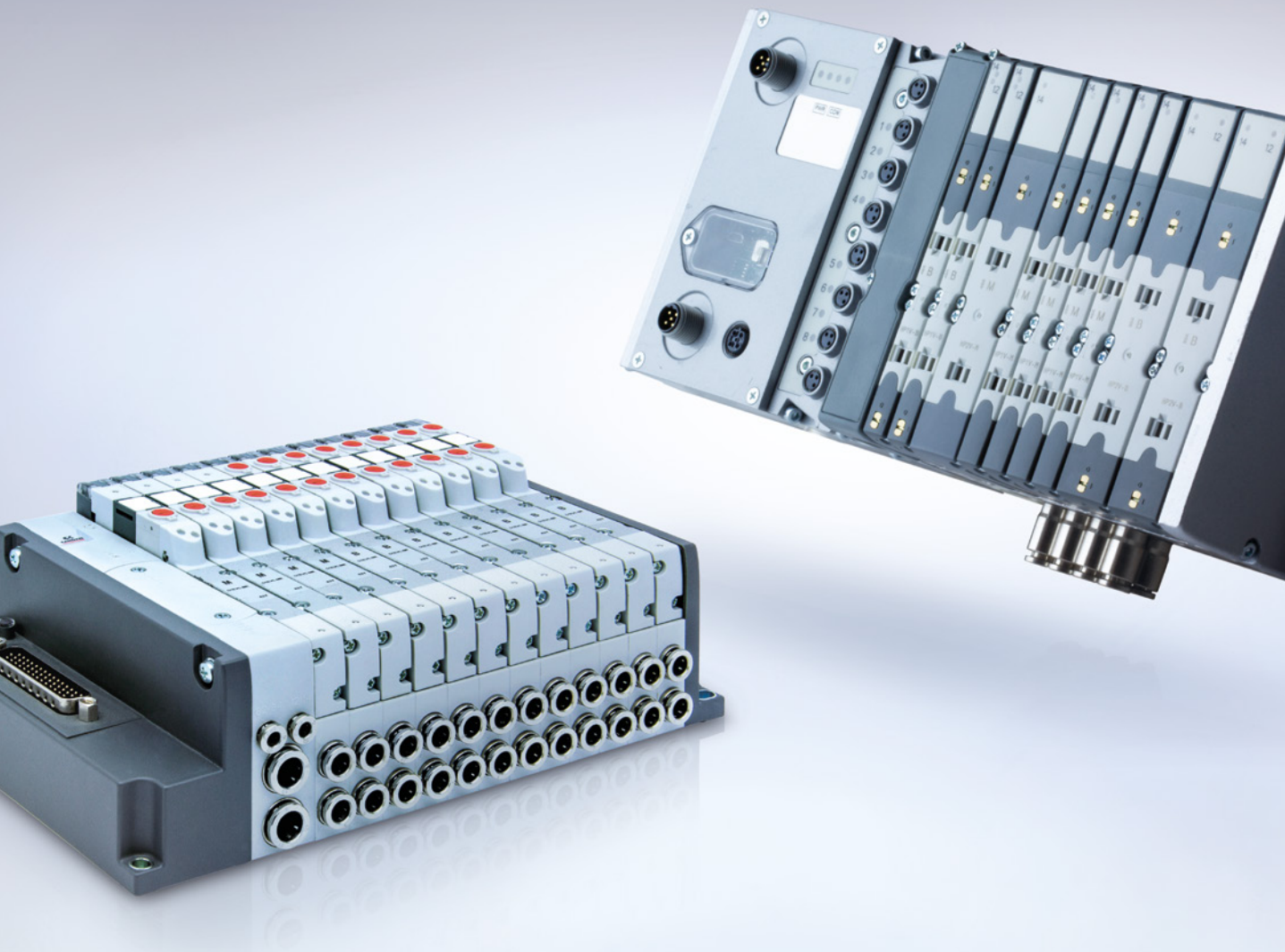


Flexibility



	D1	D2	D4
Sizes	10,5 mm	16 mm	25 mm
Flow Rate	Up to 300 NL/min	Up to 950 NL/min	Up to 2000 NL/min

FIELDBUS AND MULTIPOLE SYSTEMS



- Valve islands
- Multi-serial modules

OUR FLAGSHIP RANGE

SERIES D / Valve island with CoilVision technology

	D1	D2	D4	D5
Sizes	10,5 mm	16 mm	25 mm	10,5-16 mm
Flow Rate	250 NL/min	950 NL/min	2000 NL/min	250-950 NL/min

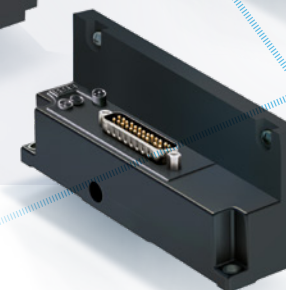
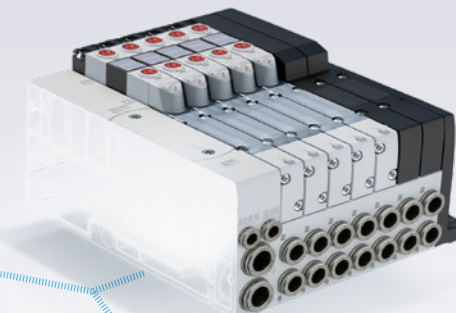
COILVISION®
TECHNOLOGY



Flexibility in connecting
different I/O modules



Integrated diagnostics
and predictivity



SERIES CX4 / Multi-serial modules

- Interfaceable with: PROFIBUS, CANopen, EtherNet/IP, PROFINET, EtherCAT
- Can be integrated with Analog and Digital I/O modules

CANopen

EtherCAT
Technology Group

EtherNet/IP

PROFI
BUS

PROFI
NET

PROPORTIONAL TECHNOLOGY



- Proportional regulators
- Proportional valves

OUR FLAGSHIP RANGE



SERIES PRE / Proportional pressure regulator

Sizes	104, 238
Flow rate	Up to 4600 NL/min
Ports	G1/4 - G1/8 - G3/8 - 1/4 NPTF



Energy efficiency



Oxygen compatibility



Modular with Series MD



IO-Link version available  IO-Link



SERIES PME / Proportional pressure regulator

Sizes	104, 238
Flow rate	Up to 4600 NL/min
Ports	G1/4 - G1/8 - G3/8 - 1/4 NPTF



Compact design



Modular with Series MD



CANopen version available



SERIES OF / Open frame controller

- Two modules: Head – Expansion

Control function	Closed-loop control of flow, pressure, or position
Flow rate	max. 90 NL/min
Ports	G1/8



Reduced configuration time



Increased efficiency

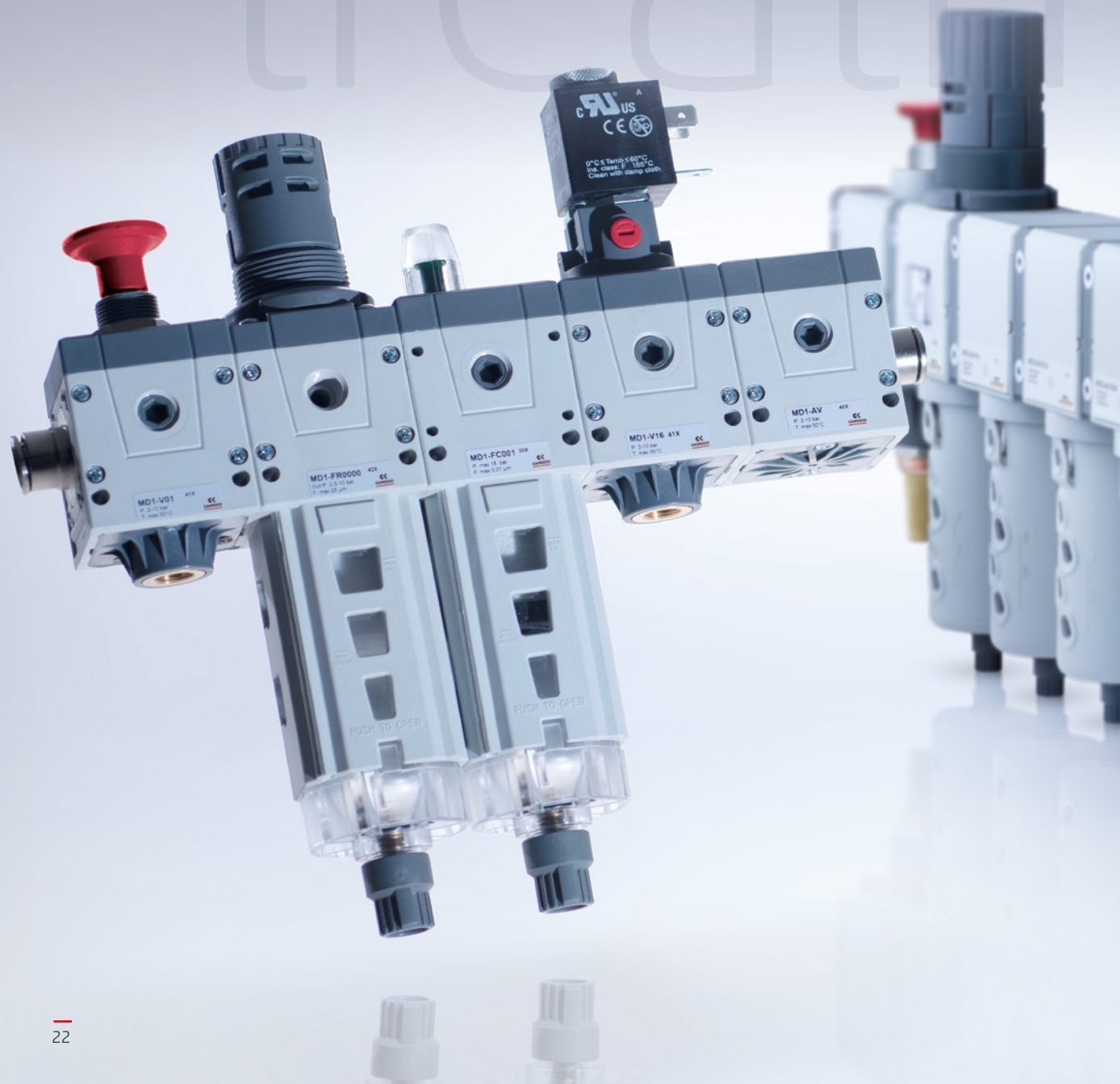


Modular solution



CANopen and IO-Link versions available

AIR TREATMENT



- Filters
- Lubricators
- Pressure regulators
- Pressure filter-regulators
- Lockable isolation 3/2-way valves
- Soft start valves
- Safety valves
- Branching modules
- Pressure switches and vacuum switches
- Pressure gauges
- Pressure boosters
- Assembled FRL groups
- Flow sensors

OUR FLAGSHIP RANGE



SERIES MX SAFEMAX / 3/2-way quick exhaust safety valve with soft start function

<i>Performance Level (PL)</i>	Single version Category 2 up to PL d Double version Category 4 up to PL e
<i>Flow rate</i>	Single version 4100 NL/min (ΔP 1) Double version 3300 NL/min (ΔP 1)



Compliant with Machinery Directive 2006/42/CE



Integrated soft start valve



SERIES BPA / Pressure booster

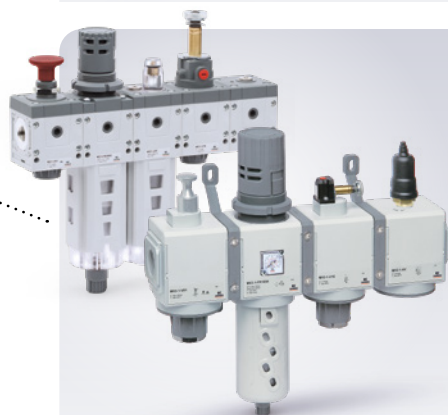
<i>Sizes</i>	40, 63, 100
<i>Multiplication ratio</i>	2:1
<i>Input pressure</i>	2 – 10 bar
<i>Flow rate</i>	250 – 1500 l/min



Energy efficiency



Greater efficiency and precision



SERIES MX - MD / Assembled FRL units

<i>Material</i>	Aluminium body (MX) Technopolymer body (MD)
-----------------	--

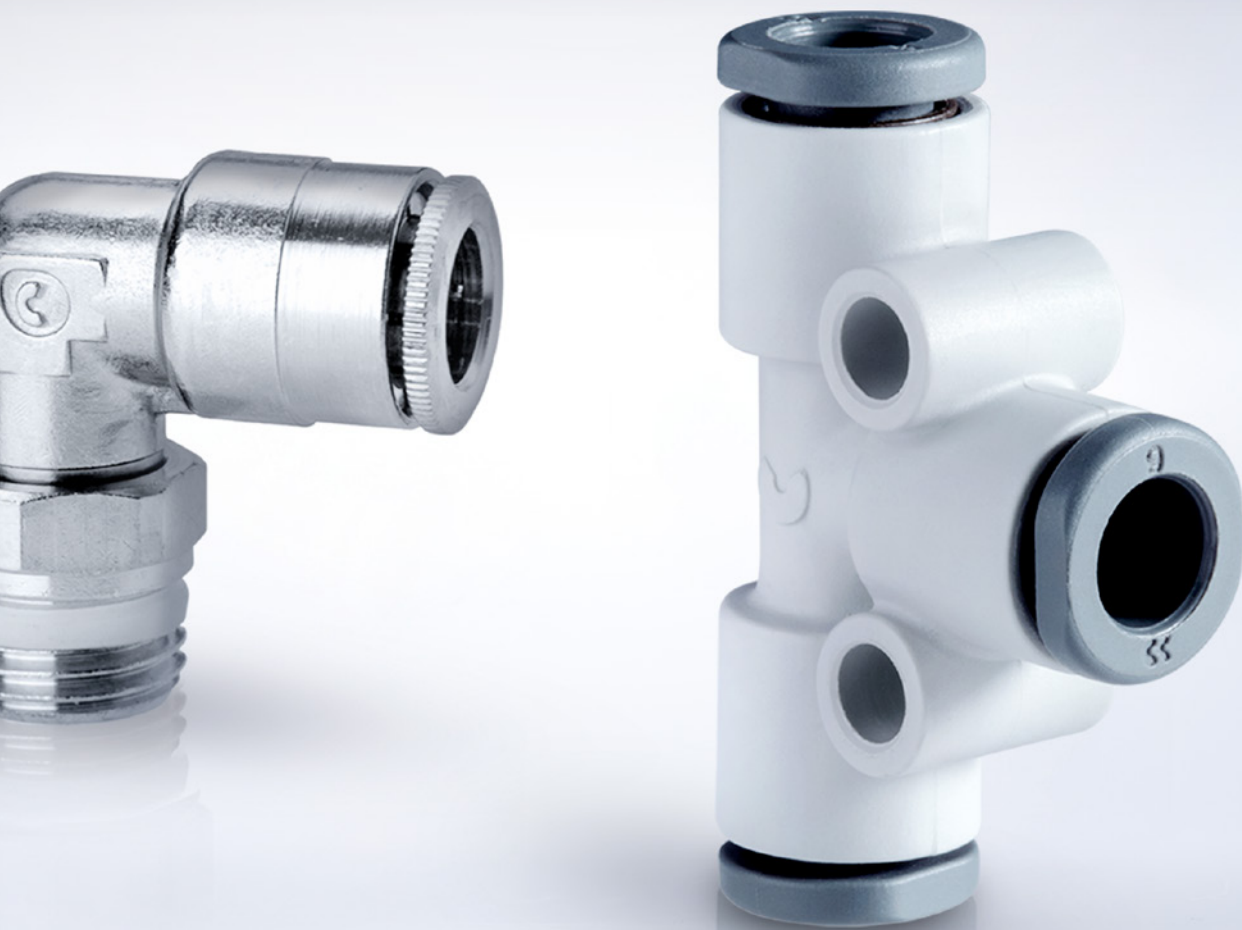


Modular and configurable



Series can be completed with all FRL components

FITTINGS, ADAPTERS, CONNECTORS AND TUBES



- Rapid push-on fittings
- Super-rapid push-in fittings
- Compression fittings
- Adapter fittings
- Quick couplings

OUR FLAGSHIP RANGE

SERIES 7000 / GRIPfit



Stainless steel gripping ring

Automation



Cooling



Beverage and Water filtration



Medical



<i>Diameters</i>	4, 6, 8, 10, 12, 16 mm	6, 8, 10, 12, 16 mm	4, 6, 8 mm	4, 6, 8, 10 mm
<i>Body</i>	Technopolymer (PA66), Nickel-plated brass	Technopolymer (PA11), Chemical nickel-plated brass	Technopolymer (PA11), Low lead brass (CW510L)	Technopolymer (PA11), Chemical nickel-plated brass
<i>Push button</i>	Technopolymer (PA66)	Technopolymer (PA66)	Technopolymer (PA66)	Technopolymer (PA66)
<i>Gripping ring</i>	Stainless steel (AISI 301)	Stainless steel (AISI 301)	Stainless steel (AISI 301)	Stainless steel (AISI 301)
<i>Sealing</i>	NBR	EPDM	EPDM	EPDM
<i>Thread</i>	Nickel-plated brass	Chemical nickel-plated brass	Low lead brass (CW510L)	Nickel-plated brass
<i>Media</i>	Compressed air and vacuum	Industrial water and cooling fluids	Drinking water, beverages, and gas	Oxygen and medical gases



Bio-based PA11 body



Compact and lightweight design



Optimal sealing



Easy connection and disconnection



DM174
Drinking Water



Regulation (CE)
n. 1935/2004



NSF169/NSF/AWWA/
ANSI-375-2020



Regulation (CE)
n. 2023/2006



21 CFR
compliance



KIWA
NSF61/ANSI 61

WE TURN YOUR IDEAS INTO SEAMLESS APPLICATIONS



CAMOZZI E-COMMERCE

Explore and discover the entire range of our products and solutions for motion and fluid control for industrial automation, life sciences and transportation directly on our e-commerce platform.



Buy our products online!



<https://shop.camozzi.com>





Automation

A Camozzi Group Company

camozzi.com

Contacts

CamoZZi Automation S.p.A.

Società Unipersonale

REGISTERED OFFICE

Via R. Rubattino, 81
20134 Milano
Italy

OPERATIONAL HEADQUARTERS

Via Eritrea, 20/I
25126 Brescia
Italy

Tel. +39 030 37921
marketing@camozzi.com

Customer Service

Tel. +39 030 3792790
service@camozzi.com

Export Department

Tel. +39 030 3792253
sales@camozzi.com

Want to learn more?
Stay tuned with
CamoZZi news

